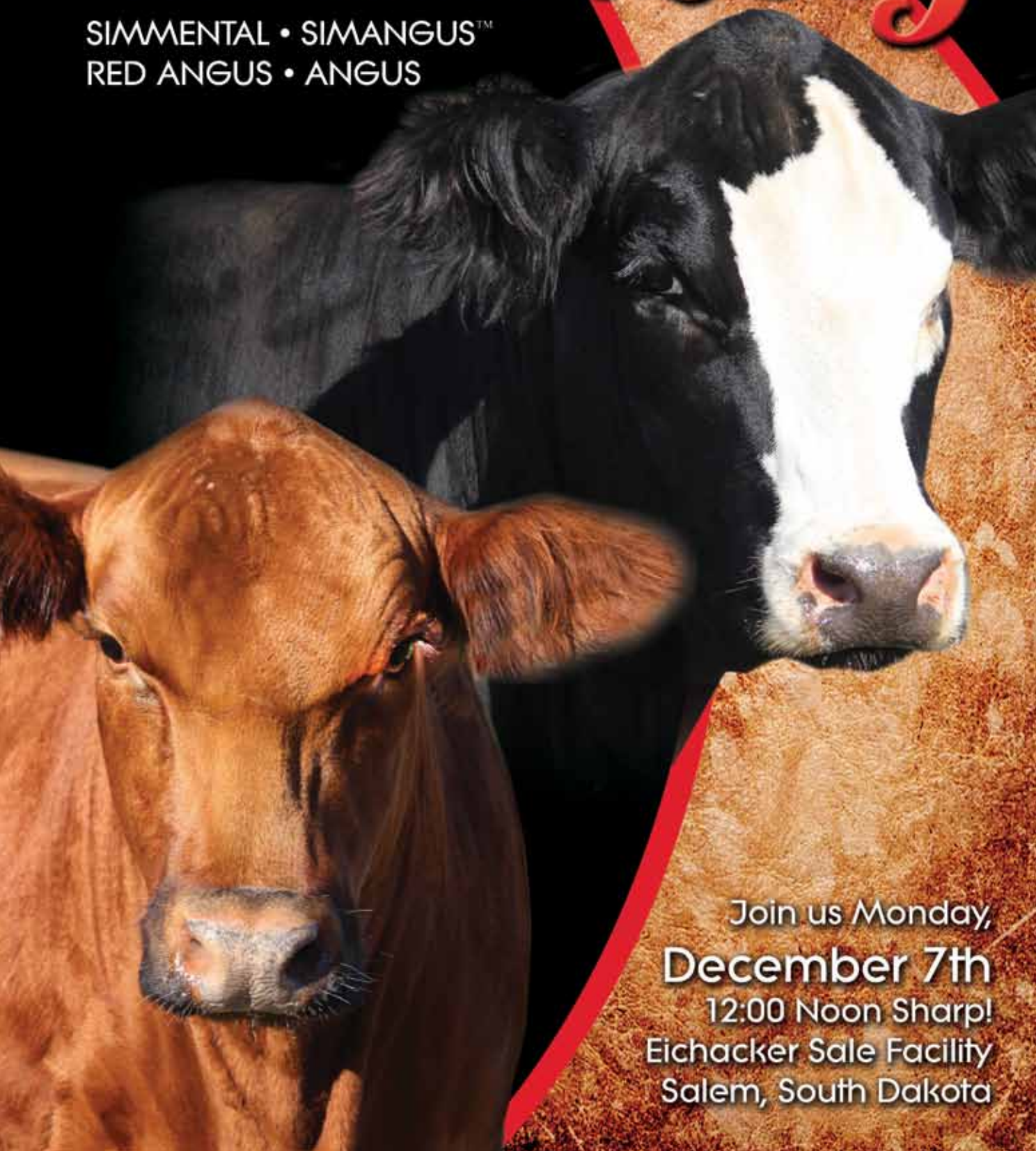


Dakota Made

Production Sale **2015**

SIMMENTAL • SIMANGUS™
RED ANGUS • ANGUS



Join us Monday,
December 7th
12:00 Noon Sharp!
Eichacker Sale Facility
Salem, South Dakota

Dakota Made

*We invite you to the
Dakota Made Sale
on December 7th!*

SALE DAY PHONES:

605-425-2391

605-421-1152

605-261-5851

612-805-7405

406-599-2395

612-805-8225

Professional Sale Management:

Eberspacher

ENTERPRISES INC.

Val & Lori Eberspacher
Office 507-532-6694
Cell 612-805-7405



Kelly Schmidt 406-599-2395
sales@ebersale.com
www.ebersale.com



Scan this code
with your smart
phone to view
catalog online.



THE EICHACKER FAMILY

HEALY SIMMENTAL

Kevin Healy Family
29621 441st Ave, Irene, SD 57037
Home 605-263-3876
Cell 605-660-3880



THE HEALY FAMILY



THE KAPPERMAN FAMILY

JK ANGUS

Jeff & Susan Kapperman & Family
25831 454th Ave, Montrose, SD
605-363-3302 Home
605-940-5104 Cell

KARIE SIMMENTALS

Pat Karie 605-390-0438



PAT KARIE

On behalf of all of us involved in the Dakota Made Sale, we would like to extend a huge welcome to Salem on Monday, December 7. As with many female production sales across the country, some things change and some things stay the same. We would like to welcome Pat Karie of Karie Simmentals as a new consignor and after a 1 year sabbatical, JK Angus is back with a nice, select group of Angus females in the offering.

I don't know that this story has much to do with cattle but I thought I would share it. You watch the news, or go to the local shopping mall and you see some of today's youth and can't help but wonder what direction this country is going. Cathy and I just got back from Louisville, KY last week where we each had the opportunity to be on a panel of judges in two different FFA Proficiency categories. And I mean to tell you....what an eye opening experience! In the Proficiency area that I was judging there were four finalists and a panel of eight judges, each finalist was allowed a two minute intro then a fifteen minute question and answer period. After the 2nd finalist left the room, one of the judges, a person that was higher up in a major company, made a comment that he just interviewed 40 people for a couple of positions in his company a few days prior and could only dream that a candidate would come through his doors like the 1st two we just had. And I might add, the next two were equally as good.

These types of stories were repeated over and over the few days that we were in Louisville. I'm not sure how many FFA members attended, maybe 60,000 or so, I made the comment that I have never seen so many clean cut, respectable, polite kids in one place.

Bottom line, there is a huge amount of talent in our youth out there. I believe the future of agriculture and the beef industry is in good hands. I also see many of these qualities in the kids that compete at our local, regional and national junior cattle shows.

As in the past, we will again have hospitality the night before our sale, so if you are at the Jewels of the Northland Sale on Saturday, come on down Sunday and view the cattle and stay for some great hospitality Sunday evening.

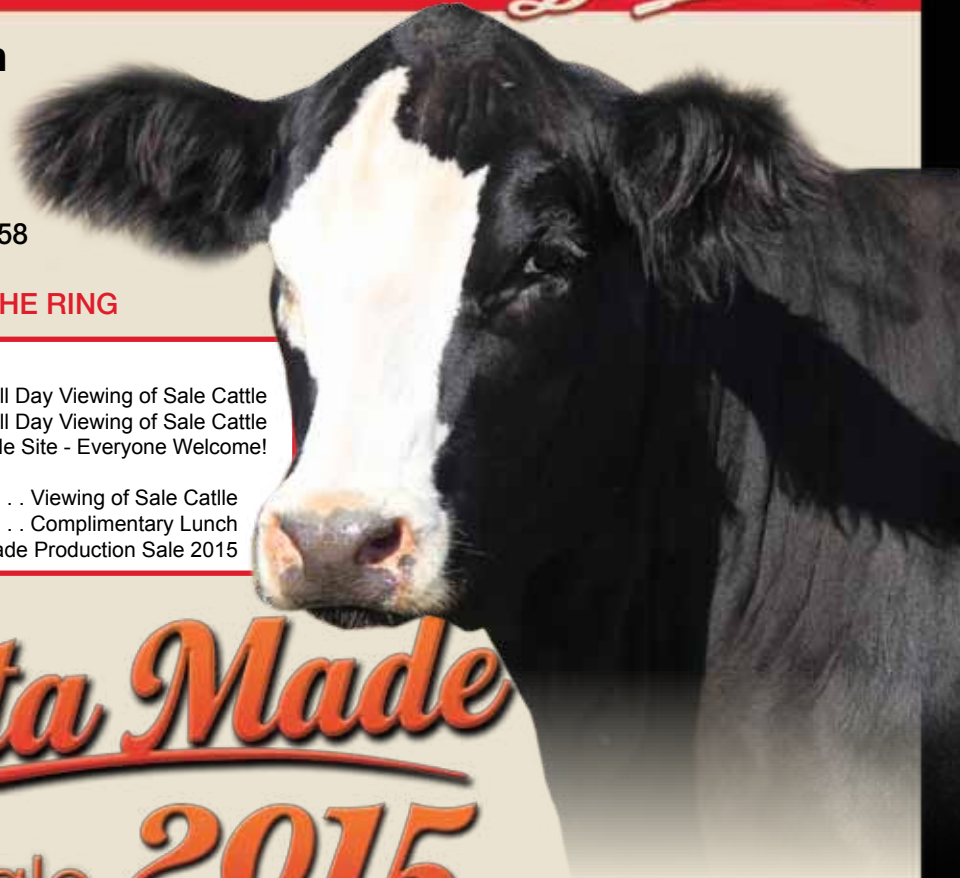
Thanks for your interest in the offering and feel free to contact any of us or the sales staff with any questions.



Steve, Adam & Cathy at National FFA Convention

This sale will be
broadcast live
on the internet! **DVAuction**
Broadcasting Real-Time Auctions

The Dakota Made Crew



**Monday, December 7th
12:00 Noon**

Eichacker Sale Facility

Facility located at the farm at
25446 445th Avenue, Salem, SD 57058

**THIS IS A VIDEO SALE ★ ★ ★
NO CATTLE WILL GO THROUGH THE RING**

Sale Schedule:

Saturday, December 5th All Day Viewing of Sale Cattle
Sunday, December 6th All Day Viewing of Sale Cattle
5:00-7:00 pmPre-sale Social at Sale Site - Everyone Welcome!
Monday, December 7th
8:00 am Viewing of Sale Cattle
11:00 am Complimentary Lunch
12:00 Noon Dakota Made Production Sale 2015

Dakota Made

Production Sale 2015

SALE HEADQUARTERS:

Quality Inns & Suites 605-336-1900
6410 N. Granite Lane, Sioux Falls - North of the Flying J Truck Stop and 35 mi. from
sale site. Room rate of \$89.95. Block held until 11/27 under Dakota Made.
Other Area Motels: Best Western U-Bar Motel 605-296-3466
130 W. Ash St., Canistota, SD 57012 - 10 mi. from sale site.
Home Motel, Salem, SD 605-425-2828 or 2818

AIRPORTS: Joe Foss Field, Sioux Falls, SD - located 35 miles from sale site
Served by United, Delta & Northwest Airlines (evening flights available)

VIDEO AUCTION: This simply means that the sale offering will be there for your visual
appraisal prior to the sale and then the big screens will be playing during the sale while you
enjoy the great South Dakota hospitality in a warm sale facility.



UPDATES & SALE ORDER: Additional information and sale order can be found on
the Eberspacher Enterprises Inc. Facebook page. Like us and receive the updates
automatically. Download the EE smart phone app to stay current!

TERMS & CONDITIONS: All cattle sell under the Terms & Conditions of the American
Simmental Association. Terms available sale day. Checks payable to Eberspacher
Enterprises Inc.

EPDs: Please note that EPDs may change from the time the sale catalog is printed until
registration papers are transferred. EPDs listed are Fall 2015 numbers.

TRUCKING: Sale management, Eichacker Simmentals, Healy Simmental, JK Angus and
Karie Simmentals will assist in moving cattle at the most economical trucking possible.
Trucking will be coordinated with the Jewels of the Northland Sale, Clara City, MN on Dec.
5th, 2015.

LIVESTOCK INSURANCE: Insurance will be available sale day through sale management
and Jame Secondino, American Livestock Insurance, phone 765-208-0956.

**Selling an Exceptional
Selection of Simmental,
SimAngus™, Angus and
Red Angus Cattle**

DIRECTIONS TO SALE SITE:

*Eichacker Simmentals, 25446
445th Ave., Salem, SD. Take Exit
368 (Canistota) on Interstate 90
in South Dakota: Go 2 mi. North,
Eichacker Farm is on the East side
of road. From Salem, SD, Hwy. 81
& 38 intersection, go 4 mi. East
and 1 1/2 mi. South. Farm is on
East side of road.*

AUCTIONEER: Col. Tracy Harl 402-469-3852

MARKETING AGENTS:

Val Eberspacher, EE Sales 612-805-7405
Kelly Schmidt, EE Sales 406-599-2395
Dustin Carter, Livestock Plus 712-898-9972
Jeff Kapperman, AgriMedia 605-940-5104
Jim Scheel, Cattle Business Weekly . 605-545-1521
Doug Parke, Parke Livestock 859-421-6100
Colton Buus, ASA Rep 605-214-3532
Vern Frey, Special Assignment. . 701-721-0344

ANNOUNCEMENTS: Announcements made
sale day and from the auction block during the
sale take precedence over printed material
associated with this sale. Anyone attending this
sale attends at their own risk. Breeders or any
of the sale force will not be responsible for any
personal injury attending this sale.

**This sale will be
broadcast live
on the internet!**

DVAuction
Broadcasting Real-Time Auctions

**Justin Dikoff
605-290-0635**



1

ES B11

Hetero Black Polled Purebred ASA#2899721

HSF Better Than Ever
GLS New Direction X184
GLS N6
NF Trump S582
ES Z59
EST45

Without a doubt one of the really good females in the offering, and yes, she is as good as her picture. Her sire, New Direction, is a trouble-free bull. At bull sale time when someone asks for a list of bulls that will cause no headaches, I tell them to look at the New Direction's, then combine that with her good uddered Trump dam, and you have an individual that ratios 115 for BW, then 104 for WW. To top it all off, she is bred to the new outcross, calving ease bull, J Bar J Nightride.

BD: 2-3-14 Tattoo: B11 Adj BW: 70 Adj WW: 608

CE	BW	WW	YW	MCE	Milk	MWW	Stay	DOC	CW	YG	Marb	BF	REA	API	TI
7	.1	61	94	3	21	51	16	8.7	26.0	-.34	-.05	-.045	.89	105	64

A.I. Sire: J Bar J Nightride 225Z on 5-10-15
Safe to AI

EPDs: 15 -2.55 56 98 8 26 54 * 10.8
Carcass: 25.2 -.26 .40 -.02 .80 143 73
Pasture Sire: ES ZX75 from 6-17 to 7-8-15



2

ES B9

Black Dbl Polled 1/2 SM 1/2 AN ASA#2899660

BD: 2-1-14 Tattoo: B9 Adj BW: 69 Adj WW: 603

CE	BW	WW	YW	MCE	Milk	MWW	Stay	DOC	CW	YG	Marb	BF	REA	API	TI
15	-2.8	68	119	7	22	56	*	10.7	37.3	-.06	.52	.039	.83	144	81

TNT Tuition U238
W/C United 956Y
Miss Werning 956W
GDAR Game Day 449
ES Z3
ES X48

This heifer has brood cow written all over her, moderate, deep, thick, just how we like them. Then look at her EPDs "awesome". Her dam's first calf, a Game Day daughter, is just as you would expect, a lot of body with an excellent udder. These United daughters are destined to make some good cows. Vet called safe to 1st AI, but was also bred on 6/1/15 to Welsh's Dew It Right, so could possibly be bred to the 2nd AI.

A.I. Sire: Hook's Broadway 11B on 5-12-15 • Safe to AI
EPDs: 14 -2.15 65 108 9 24 56 * 10.75
Carcass: 31.1 -.24 .48 -.01 .98 147 79
2nd A.I. Sire: Welsh's Dew It Right 067T 6-1-15
Pasture Sire: ES ZX75 from 6-17 to 7-8-15



ES X48, Maternal Grandam



3

ES B12

Black Dbl Polled 3/4 SM 1/4 AN ASA#2899677

BD: 2-5-14 Tattoo: B12 Adj BW: 81 Adj WW: 669

CE	BW	WW	YW	MCE	Milk	MWW	Stay	DOC	CW	YG	Marb	BF	REA	API	TI
14	1.9	80	116	8	22	63	*	10.6	41.2	-.32	.13	-.050	1.00	133	75

CDI Ridgeline 32T
ES Ridgider YW3
ES W3
ES Power Up XS37
ES Z73
ES W37

Here is a Ridgider daughter that offers a lot of growth for a calving ease bull. She ranks in the top 2% of the breed for WW. A lot of that comes from the dam's side of the pedigree, her grandam was an absolute tank.

A.I. Sire: Hook's Yellowstone 97Y on 5-24-15 • Safe to AI
EPDs: 14 .85 72 108 9 24 60 * 11.05
Carcass: 35.35 -.37 .26 -.06 .98 142 75
Pasture Sire: ES ZX75 from 6-17 to 7-8-15



4

ES B16

Black Dbl Polled 3/4 SM 1/4 AN ASA#2899682

PVF-BF BF26 Black Joker
 SS Ebonys Grandmaster
 SOSF Ebonys Joy L-123
 TJ High Bet 236X
 ES Z9
 ES X106

Every year it seems like we talk to someone who bought a Grandmaster daughter in the sale and their only regret is they should've purchased a couple more of them. This gal is built just like them, deep flanked and big topped with a nice square hip. Out of a TJ High Bet 1st calf heifer. Two years in a row our High Bet bulls blew all the other sire groups right out of the water with their outstanding ultrasound data.

BD: 2-10-14 Tattoo: B16 Adj BW: 77 Adj WW: 612

CE	BW	WW	YW	MCE	Milk	MWW	Stay	DOC	CW	YG	Marb	BF	REA	API	TI
7	1.3	65	95	4	25	57	*	9.9	28.5	-.18	.41	-.005	.75	116	72

A.I. Sire: *Welshs Dew It Right 067T* on 5-12-15
 Safe to AI
 EPDs: 12 .95 64 88 7 20 53 * 12.15
 Carcass: 23.5 -.29 .28 -.03 .79 129 69
 Pasture Sire: *ES ZX75* from 6-17 to 7-8-15

5

ES B15

Black Dbl Polled 1/2 SM 1/2 AN ASA#2899673

BD: 2-8-14 Tattoo: B15 Adj BW: 74 Adj WW: 575

CE	BW	WW	YW	MCE	Milk	MWW	Stay	DOC	CW	YG	Marb	BF	REA	API	TI
15	-.5	79	133	7	20	59	*	10.9	48.5	-.01	.49	.022	.67	141	84

TNT Tuiton U238
 W/C United 956Y
 Miss Werning 956W
 CAR Efficient 534
 ES Z10
 ES X88

One of the most sought after sire groups by commercial cattlemen in last spring's bull sale season was definitely the W/C United bulls. They kept asking where could they find more. It's easy to see why when their counter parts are females like this. WW & YW EPDs that rank her in the top 3% and 2% of the breed, then bred to the new calving ease, total outcross bull, J Bar J Nightride.

A.I. Sire: *J Bar J Nightride 225Z* on 5-12-15 • Safe to AI
 EPDs: 19 -2.85 65 117 10 25 58 * 11.9
 Carcass: 36.45 -.10 .67 .01 .69 172 85
 Pasture Sire: *ES ZX75* from 6-17 to 7-8-15



6

ES B18

Black Dbl Polled Purebred ASA#2899647

BD: 2-12-14 Tattoo: B18 Adj BW: 81 Adj WW: 650

CE	BW	WW	YW	MCE	Milk	MWW	Stay	DOC	CW	YG	Marb	BF	REA	API	TI
15	.7	71	110	8	28	64	14	12.3	36.4	-.41	-.02	-.059	1.14	116	73

CDI Ridgeline 32T
 ES Ridgerider YW3
 ES W3
 KS Black Diamond W992
 ES Z107
 EST51

We always like cattle that come from good cow families as B18 does. Her grandam has been part of our embryo program for four years now. She is a beautiful uddered DCC New Look cow. Her dam, Z107, was part of a flush where three bulls were in the bull sale and were as uniform as any we have raised. She offers some nice individual ratios at 102 for BW, then on to 111 for WW.

Pasture Sire: *ES ZX75* from 6-17 to 7-8-15 • 7-9-15
 EPDs: 12 1.9 75 110 7 27 64 17 11.45
 Carcass: 38.15 -.39 .18 -.05 1.16 127 77
 Pasture Sire: *ES ZX75* from 6/17- to 7-8-15





ES BT51-2,
Full Brother

7

ES B92

Black Baldy Dbl Polled 3/4 SM 1/4 AN ASA#2899790

Remington On Target 2S
Remington Lock N Load 54U
Bar 15 Miss Knight 78E-51G
DCC New Look 101
EST51
ESP85

Here's a female that ought to sort herself to the top of your list sale day. She's an attractive yet very muscular blaze faced Lock N Load daughter that is a full sister to our high selling bull last spring, ES Buckshot, selling for \$40,000 to the Healy and Goeken Families. Her donor dam, T51, is an awesome specimen, she is a big topped, square hipped cow with an udder you would want on every female in your herd. And did we mention Lock N Load semen is almost impossible to get anymore. Bred to Dew It Right for a Purebred calf.

BD: 2-13-14 Tattoo: B92 Adj BW: 97 ET Adj WW: 639

CE	BW	WW	YW	MCE	Milk	MWW	Stay	DOC	CW	YG	Marb	BF	REA	API	TI
9	1.3	65	112	7	24	57	*	12.1	39.4	-.38	.02	-.057	1.10	108	65

A.I. Sire: *Welshs Dew It Right 067T on 5-12-15 Safe to AI*

EPDs: 13 .95 65 97 8 20 52 * 13.25
Carcass: 28.95 -.39 .08 -.06 .96 124 65
Pasture Sire: *ES ZX75 from 6-17 to 7-8-15*

8

ES B23

Black Dbl Polled Purebred ASA#2899615



BD: 2-15-14 Tattoo: B23 Adj BW: 76 Adj WW: 603

CE	BW	WW	YW	MCE	Milk	MWW	Stay	DOC	CW	YG	Marb	BF	REA	API	TI
16	-.6	63	87	9	18	49	17	12.6	20.4	-.42	.24	-.066	.93	134	74

HTP SVF In Dew Time
Welshs Dew It Right 067T
SVF/NJC Senerita N29
Ellingson Legacy M229
ES Z78
EST15

Another phenotypically correct Dew It Right daughter that offer a unique calving ease package. She has a direct calving ease of 16 and out of ES RidgeRider's granddam, then bred to W/C Lockdown. We calved a couple of heifers bred to Lockdown last spring and really liked what we saw, they came easy, with very low birth weights. Then at two

A.I. Sire: *W/C Lock Down 206Z on 5-8-15 • Safe to AI*
EPDs: 16 -1.05 69 109 10 17 52 * 11.7
Carcass: 33.1 -.25 .37 -.03 .84 148 77
Pasture Sire: *ES ZX75 from 6-17 to 7-8-15*

weeks of age, had a real cool look about them. We used him very heavy in our heifer program this spring.

9

ES B20

Black Dbl Polled 3/4 SM 1/4 AN ASA#2899692



BD: 2-13-14 Tattoo: B20 Adj BW: 93 Adj WW: 602

CE	BW	WW	YW	MCE	Milk	MWW	Stay	DOC	CW	YG	Marb	BF	REA	API	TI
17	.3	66	103	12	23	56	*	10.4	31.7	-.30	.30	-.020	1.03	152	73

CDI Ridgeline 32T
ES Ridgider YW3
ES W3
GDAR Game Day 449
ES Z23
ES X59

The one common denominator in the Ridgider females as we put the footnotes together is their WW Ratio, they consistently ratio well over 100. Not bad for a heifer bull. She is bred to what I felt was one of the most interesting and best Purebred bulls to sell last spring, Hooks Broadway. We can't wait for those calves to hit the ground this spring.

A.I. Sire: *Hook's Broadway 11B on 5-11-15 • Safe to AI*
EPDs: 15 -.6 64 99 12 24 56 * 10.6
Carcass: 28.3 -.36 .37 -.03 1.08 152 75
Pasture Sire: *ES ZX75 from 6-17 to 7-8-15*



Val

10

ES B22

Black Dbl Polled 3/4 SM 1/4 AN ASA#2899705

BD: 2-15-14 Tattoo: B22 Adj BW: 86 Adj WW: 554

CE	BW	WW	YW	MCE	Milk	MWW	Stay	DOC	CW	YG	Marb	BF	REA	API	TI
13	.8	63	84	9	17	48	*	11.8	20.3	-.37	.21	-.059	.80	134	67

HTP SVF In Dew Time
Welsh Dew It Right 067T
SVF/NJC Senerita N29
ES Power Up XS37
ES Z40
ESU21

This is why we keep going back and using the Dew It Right bull, from a phenotypical standpoint, they are impressive. Every year we get comments like "Where did these Dew It Rights come from" "Tell me more about the Dew It Right bull". The hard part of this is admitting that, yes, we originally tried him off Kelly Schmidt's recommendation and it even worked. All kidding aside, help yourself, this is one of the good ones.

A.I. Sire: Hook's Yellowstone 97Y on 5-6-15
Safe to AI
EPDs: 14 .3 64 92 10 22 53 * 11.65
Carcass: 24.9 -.39 .30 -.06 .88 142 71
Pasture Sire: ES ZX75 from 6-17 to 7-8-15

11

ES B27

Black Dbl Polled 3/4 SM 1/4 AN ASA#2899680

BD: 2-27-14 Tattoo: B27 Adj BW: 90 Adj WW: 599

CE	BW	WW	YW	MCE	Milk	MWW	Stay	DOC	CW	YG	Marb	BF	REA	API	TI
17	1.5	70	108	12	24	59	*	8.9	36.2	-.31	.23	-.037	.99	147	73

CDI Ridgeline 32T
ES Ridgerider YW3
ES W3
TNT Finale W241
ES Z13
ES X14

You'll like this female for her tremendous rib shape and overall balance. Then add in her 102 WW ratio and above average growth and maternal EPDs and we have an individual that ought to make an excellent cow. Bred to the new \$70,000 bull, Hooks Broadway.

A.I. Sire: Hook's Broadway 11B on 5-13-15 • Safe to AI
EPDs: 15 .0 66 102 12 25 58 * 9.85
Carcass: 30.55 -.37 .33 -.04 1.06 149 74
Pasture Sire: ES ZX75 from 6-17 to 7-8-15



12

ES B25

Black Homo Polled 1/2 SM 1/2 AN ASA#2899658

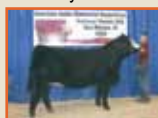
BD: 2-22-14 Tattoo: B25 Adj BW: 79 Adj WW: 529

CE	BW	WW	YW	MCE	Milk	MWW	Stay	DOC	CW	YG	Marb	BF	REA	API	TI
12	-.2	59	100	10	25	54	*	12.5	29.6	-.17	.46	.022	.94	138	72

Boyd New Day 8005
GDAR Game Day 449
G D A R Miss Wix 474
SVF/NJC Mo Better M217
CCR Ms. Snapple 9063W
CCR 217M Dream On 5098R

Here is a combination heifer sired by the Angus female maker bull, GDAR Game Day, and one of our most powerful cows on the place "Snapple". Two years running, Snapple had a flush of bulls sired by SAV Pioneer that created a lot of excitement and averaged over \$7200.

A.I. Sire: W/C United 956Y on 5-11-15 • Safe to AI
EPDs: 12 -.05 75 128 8 21 58 * 10.9
Carcass: 46.1 -.07 .51 .03 .89 140 82
Pasture Sire: ES ZX75 from 6-17 to 7-8-15



CCR Ms. Snapple 9063W, Dam





HS Look At Me X381N, Dam



HHSF Black Glitter, Maternal Grandam

13 ES B97
Black Polled 5/8 SM 3/8 AN ASA#2899805

BD: 2-16-14 Tattoo: B97 Adj BW: 97 ET Adj WW: 635

CE	BW	WW	YW	MCE	Milk	MWW	Stay	DOC	CW	YG	Marb	BF	REA	API	TI
7	3.6	76	110	3	25	63	*	12.3	40.3	-.30	.41	-.081	.68	110	75

Mr. NLC Upgrade U8676
R&R Chamberlain X744
R&R Miss Traveler T744
B C Lookout 7024
HS Look At Me X381N
HHSF Black Glitter

This heifer is the product of a flush that worked extremely well, at one time last spring they guys had three full sisters in the barn trying to figure out which one would make the best show heifer. Nice problem to have. Well, I don't know about a show heifer, but the consensus was they will all make excellent cows. Her dam, known as "Jewel" around here, is a BC Lookout X Glitter, a mating which has worked well at Hilbrand's. Her mating to Lock Down could be very, very interesting.

A.I. Sire: W/C Lock Down 206Z on 5-11-15 • Safe to AI
EPDs: 12 1.05 76 120 7 21 59 * 11.55
Carcass: 43.05 -.19 .46 -.04 .72 134 80
Pasture Sire: ES ZX75 from 6-17 to 7-8-15



14 ES B32 ASA#2899661
Black Baldy Dbl Polled 3/4 SM 3/16 AN 1/16 AR

BD: 3-14-14 Tattoo: B32 Adj BW: 87 Adj WW: 619

CE	BW	WW	YW	MCE	Milk	MWW	Stay	DOC	CW	YG	Marb	BF	REA	API	TI
5	4.4	73	123	8	18	54	*	9.4	50.2	-.26	.15	-.050	.92	99	67

Remington Lock N Load 54U
ES Surelock ZW15
ES W15
ESTL30
ES W50
ESP8

If you want a baldy that will sire some powerful bulls, this one has to be in contention. Her sire, ES Surelock, is a Lock N Load son that will flat add pounds to his offspring. B32 X Dew It Right or power X phenotype, the calf could pay for the cow.

A.I. Sire: Welshs Dew It Right 067T on 5-6-15 • Safe to AI
EPDs: 10 2.5 69 102 9 17 51 * 11.9
Carcass: 34.35 -.33 .15 -.06 .87 120 67
Pasture Sire: ES ZX75 from 6-17 to 7-8-15



15 ES B35 ASA#2899761
Black Dbl Polled 3/4 SM 1/4 AN

BD: 3-15-14 Tattoo: B35 Adj BW: 74 Adj WW: 603

CE	BW	WW	YW	MCE	Milk	MWW	Stay	DOC	CW	YG	Marb	BF	REA	API	TI
10	.5	72	101	10	19	55	*	12.9	30.5	-.17	.63	-.015	.68	149	82

Triple C Singletary S3H
CCR Cowboy Cut 5048Z
CCR Ms. 4045 Time 7322T
J M G Net Profit 292
ES Y80
EST34

This package offers some of the newest genetics available today, sired by CCR Cowboy Cut, the new hot sire at Triangle J, and bred to W/C Lock Down, the young calving ease bull owned by Werning Cattle Company, Walsh and 4B.

A.I. Sire: W/C Lock Down 206Z on 5-7-15 • Safe to AI
EPDs: 13 -.5 73 116 10 18 54 * 11.85
Carcass: 38.15 -.13 .57 -.01 .72 151 83
Pasture Sire: ES ZX75 from 6-17 to 7-8-15



16

ES B33

Red Homo Polled 1/2 SM 1/2 AR ASA#2899611

NF Trump S582
CDI Authority 77X
CDI Ms. Crockett 88T
Red Brylor Squall 230S
EIR W202
EIR T202

On the red side of things, nothing has ever matched the excitement like the CDI Authority sons did in last year's bull sale. B33's grandam, T202, had two of them that averaged \$11,000. T202 is a Red Angus cow that has never let us down whether we flush her to a Red Angus or Simmental, it works and works well. Bred to the heterozygous black bull, New Direction.

BD: 3-14-14 Tattoo: B33 Adj BW: 74 Adj WW: 527

CE	BW	WW	YW	MCE	Milk	MWW	Stay	DOC	CW	YG	Marb	BF	REA	API	TI
13	-1.8	62	95	3	19	50	*	*	24.0	-.23	.20	-.013	.78	121	68

A.I. Sire: GLS New Direction X184 on 5-12-15 • Safe to AI
EPDs: 11 -1.1 57 89 4 20 48 * *
Carcass: 21.1 -.30 .02 -.03 .81 109 61
Pasture Sire: ES ZX75 from 6-17 to 7-8-15

17

ES B36

Black Dbl Polled 1/2 SM 1/2 AN ASA#2899626

BD: 3-15-14 Tattoo: B36 Adj BW: 99 Adj WW: 606

CE	BW	WW	YW	MCE	Milk	MWW	Stay	DOC	CW	YG	Marb	BF	REA	API	TI
8	5.0	83	131	8	16	58	*	12.3	54.9	.00	.30	-.021	.40	112	74

SA V 8180 Traveler 004
SA V 004 Predominant 4438
SA V Emblynette 1182
TNT Knock Out R206
ES X56
EST79

A tremendously long sided individual that ratioed 103 for WW and boasts a set of WW & YW EPDs that make her in the top 1% and 2% of the breed. SAV Predominant is a 004 son and the 004 females in our herd have always been some of our best SimAngus™.

A.I. Sire: Hook's Yellowstone 97Y on 5-11-15 • Safe to AI
EPDs: 11 2.4 74 115 9 21 58 * 11.9
Carcass: 42.2 -.21 .34 -.05 .68 132 75
Pasture Sire: ES ZX75 from 6-17 to 7-8-15



18

ES B38

Red Dbl Polled 3/4 SM 1/4 AR ASA#2899650

BD: 3-16-14 Tattoo: B38 Adj BW: 97 Adj WW: 584

CE	BW	WW	YW	MCE	Milk	MWW	Stay	DOC	CW	YG	Marb	BF	REA	API	TI
6	3.4	74	108	7	20	57	19	6.2	38.6	-.35	.33	-.038	1.14	127	77

WS Beef King W107
Hook's Yukon 80Y
Hooks Mika 141M
LBR Crockett R81
EST224
N206

Here is one of the more powerful Yukon daughters you will find. Her dam, T224, is a beautiful cow with an excellent udder. She had a bull that sold for \$7750 to Travis Beason in our 2014 bull sale and is also the grandam to ES Surelock, the Lock N Load son owned by Windy Creek. Her Dew It Right calf could be a pretty cool unit.

A.I. Sire: Welshs Dew It Right 067T on 5-11-15 • Safe to AI
EPDs: 11 2.0 69 95 8 18 53 21 10.3
Carcass: 28.55 -.37 .24 -.05 .98 133 74
Pasture Sire: ES ZX75 from 6-17 to 7-8-15



ES Y42, 3/4 Sister





ES AX89, Full Brother



ESS16, Maternal Grandam

19

ES B43

Black Baldy Dbl Polled 3/4 SM 1/4 AN ASA#2899646

Remington On Target 2S
Remington Lock N Load 54U
Bar 15 Miss Knight 78E-51G
SAS T101 Sweet Meat

ES X89
ESS16

This beautiful blaze faced Lock N Load gal will get your heart pumping. She is about as thick as you can make one, yet maintains that nice front end. Her grandam was an excellent uddered 004 cow. Not too many opportunities to buy a Lock N Load daughter any more, more or less one of this caliber. A full brother sold for \$7000 in our 2014 bull sale. Safe to AI.

BD: 3-17-14 Tattoo: B43 Adj BW: 96 Adj WW: 633

CE	BW	WW	YW	MCE	Milk	MWW	Stay	DOC	CW	YG	Marb	BF	REA	API	TI
4	4.6	75	122	8	16	53	13	11.9	49.6	-.29	.03	-.057	.96	96	68

A.I. Sire: *Connealy Capitalist 028* on 5-9-15
Safe to AI

EPDs: 12 .2 70 118 9 25 60 * 12.0

Carcass: 40.75 .39 .02 .99 129 76

Pasture Sire: *ES ZX75* from 6-17 to 7-8-15



20

ES B46

Red Dbl Polled 3/4 SM 1/4 AR ASA#2899737

NF Trump S582
CDI Authority 77X
CDI Ms. Crocket 88T
WS Beef King W107

ES Y60
EIR U219

This pedigree represents the heart of our red program, Authority X Beef King X Red Angus. Like many of the others, ratioed 104 for BW, then 102 for WW. You can't go wrong owning females like this, the pedigree is time tested. Then what really makes it adventurous or exciting is her mating to Hook's Broadway. A bull I felt was one of the most exciting bulls to sell last spring.

A.I. Sire: *Hook's Broadway 11B* on 5-11-15 • Safe to AI

EPDs: 11 .35 69 104 8 21 56 * 10.95

Carcass: 32.05 -.34 .35 -.01 1.04 136 75

Pasture Sire: *ES ZX75* from 6-17 to 7-8-15

BD: 3-17-14 Tattoo: B46 Adj BW: 79 Adj WW: 599

CE	BW	WW	YW	MCE	Milk	MWW	Stay	DOC	CW	YG	Marb	BF	REA	API	TI
9	2.2	77	112	6	17	55	17	11.1	39.2	-.26	.27	-.030	.95	127	78



21

ES B47

Black Dbl Polled 3/4 SM 3/16 AN 1/16 AR ASA#2899629

Remington Lock N Load 54U
ES Surelock ZW15
ES W15
Mr. NLC Superior S6018

ES X31
ESP61

As a sire group the Surelock's offer as much mass and overall performance as any. Her dam had a WW ratio of 105 on her 1st three calves.

Pasture Sire: *ES ZX75* from 6-17 to 7-8-15 • 6-17-15

EPDs: 6 4.4 73 112 6 22 58 * 10.75

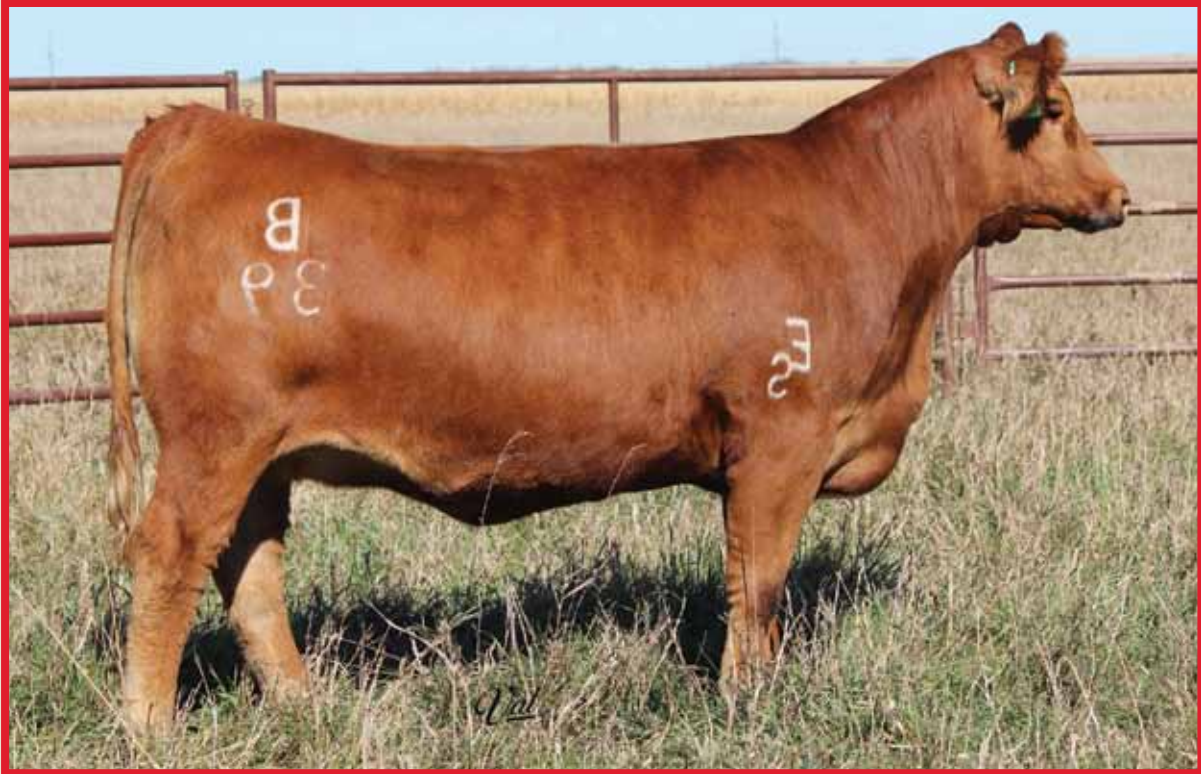
Carcass: 42.95 -.34 .23 -.05 1.07 106 69

BD: 3-17-14 Tattoo: B47 Adj BW: 97 Adj WW: 564

CE	BW	WW	YW	MCE	Milk	MWW	Stay	DOC	CW	YG	Marb	BF	REA	API	TI
2	5.7	68	113	7	18	52	*	10.9	46.0	-.32	.07	-.063	.95	82	59



ESP61, Maternal Grandam



22

ES B39

Red Dbl Polled 1/2 SM 1/2 AR ASA#2899815

NF Trump S582
 CDI Authority 77X
 CDI Ms. Crocket 88T
 MLK CRK Cub 722
 EIR X203
 EIR U205

CDI Authority X Red Angus, in our opinion is the perfect combination. When you see females like this it's easy to see why every red cow in our donor program over the last two years has been flushed at least once to Authority. She has some real crazy ratios at 117 for BW then on to 107 for WW ratio. Dam has a WW ratio of 111 on three calves.

BD: 3-16-14 Tattoo: B39 Adj BW: 68 Adj WW: 627

CE	BW	WW	YW	MCE	Milk	MWW	Stay	DOC	CW	YG	Marb	BF	REA	API	TI
10	-.7	67	103	3	24	57	*	12.4	29.9	-.18	.23	-.021	.65	114	71

A.I. Sire: GLS New Direction X184 on 5-11-15
 Safe to AI
 EPDs: 9 -.55 60 92 4 22 52 * 11.65
 Carcass: 24.05 -.27 .03 -.04 .74 105 62
 Pasture Sire: ES ZX75 from 6-17 to 7-8-15

23

ES B49

Black Baldy Dbl Polled Purebred ASA#2899767

BD: 3-18-14 Tattoo: B49 Adj BW: 78 Adj WW: 570

CE	BW	WW	YW	MCE	Milk	MWW	Stay	DOC	CW	YG	Marb	BF	REA	API	TI
12	.2	58	87	9	16	45	16	12.4	21.9	-.30	.06	-.028	.86	115	65

SVF Steel Force S701
 FBF1 Combustible
 Lazy H Burn Baby Burn R34
 Ellingson Legacy M229
 ES Y21
 ESU16

Here is a moderate framed, super fancy front ended heifer. Probably the neatest fronted heifer we have in the offering. Both her dam and grandam were scored very high on udder quality last spring. Her grandam, the U16 cow, had a \$17,000 bull in our 2015 bull sale going to Jeff Harwood in Montana.



BU16, Grandam son

A.I. Sire: SA V Angus Valley 1867 on 5-10-15 • Safe to AI
 EPDs: 17 -1.3 59 100 11 18 48 * 10.95
 Carcass: 27.7 -.10 .47 .02 .71 148 72
 Pasture Sire: ES ZX75 from 6-17 to 7-8-15



24

ES B5

Black Dbl Polled Purebred ASA#2899769

BD: 1-22-14 Tattoo: B5 Adj BW: 86 ET Adj WW: 622

CE	BW	WW	YW	MCE	Milk	MWW	Stay	DOC	CW	YG	Marb	BF	REA	API	TI
6	3.7	71	117	4	21	56	20	11.4	45.5	-.35	-.02	-.064	1.04	112	67

Remington On Target 2S
 Remington Lock N Load 54U
 Bar 15 Miss Knight 78E-51G
 Cott-GFI Fullback 0038N
 EST78
 ESP79

She is a great choice if you are looking for a Lock N Load daughter with a little more gas in the tank. She is a long sided, big bodied female that is in the top 5% of the breed for WW and her dam had a \$10,000 bull in last year's bull sale. She is an ET daughter that comes from a very consistent flush of calves.

A.I. Sire: ES Ridgerider YW3 on 5-6-15 • Safe to AI
 EPDs: 15 .95 67 106 8 23 56 18 11.1
 Carcass: 32.4 -.42 .02 -.07 1.13 124 70
 Pasture Sire: ES ZX75 from 6-17 to 7-8-15





25

ES B45

ASA#2899755

Black Dbl Polled 3/4 SM 3/16 AN 1/16 AR

Remington Lock N Load 54U
 ES Surelock ZW15
 ES W15
 ES Dakota Blizzard SL71
 ESU75
 ESL84

ES Surelock at his best here! Ratioing 110 for WW, she is destined to be a herd bull building factory. With her depth of rib and explosive rear quarter combined with the phenotype Dew It Right can add, her first calf could be a bell ringer.

BD: 3-17-14 Tattoo: B45 Adj BW: 101 Adj WW: 642

CE	BW	WW	YW	MCE	Milk	MWW	Stay	DOC	CW	YG	Marb	BF	REA	API	TI
3	5.9	74	126	3	21	58	*	10.0	53.9	-.29	.06	-.0561	.01	80	64

A.I. Sire: *Welshs Dew It Right 067T* on 5-1-15
 Safe to AI

EPDs: 9 3.25 69 104 6 19 53 * 12.2
 Carcass: 36.2 -.34 .10 -.06 .92 110 65
 Pasture Sire: *ES ZX75* from 6-17 to 7-8-15

26

ES B51

Black Dbl Polled 3/4 SM 1/4 AN ASA#2899749

BD: 3-18-14 Tattoo: B51 Adj BW: 89 Adj WW: 608

CE	BW	WW	YW	MCE	Milk	MWW	Stay	DOC	CW	YG	Marb	BF	REA	API	TI
9	2.3	78	123	7	15	54	*	9.2	46.4	-.13	.38	-.015	.73	126	77

TNT Tuition U238
 W/C United 956Y
 Miss Werning 956W
 ES Reloaded TR64

ES X63

ESJ22

She is a daughter out of W/C United, his sons created a lot of excitement during the 2015 spring bull sale season. The United progeny are known for their exceptional WW & post weaning gain and a dam with a superior udder. Bred to the \$70,000 bull, Hook's Broadway. Safe to AI.

A.I. Sire: *Hook's Broadway 11B* on 5-10-15
 EPDs: 11 .4 70 109 9 20 55 * 10.0
 Carcass: 35.65 -.28 .41 -.03 .93 139 77
 Pasture Sire: *ES ZX75* from 6-17 to 7-8-15

27

ES B52

Red Homo Polled 1/2 SM 1/2 AR ASA#2899814

BD: 3-18-14 Tattoo: B52 Adj BW: 76 Adj WW: 583

CE	BW	WW	YW	MCE	Milk	MWW	Stay	DOC	CW	YG	Marb	BF	REA	API	TI
13	-.8	68	98	11	25	59	*	6.8	26.8	-.26	.40	-.037	.73	143	76

WS Beef King W107
 Hook's Yukon 80Y
 Hooks Mika 141M
 OHRR Dakota Copper 29K

EIR U208

EIR PM202

She is possibly the bigger framed heifer of the Yukon sire group. But I mean that in a good way as she is a lot like her dam who always brings home a good one. She also had her 5th calf this spring and scored exceptionally well on udder quality. So with the U208 granddam and sired by Yukon, B52 should be a maternal gem. Safe to AI.

A.I. Sire: *W/C Lock Down 206Z* on 5-4-15
 EPDs: 14 -1.15 72 114 11 21 56 * 8.8
 Carcass: 36.3 -.17 .45 -.02 .74 150 80
 Pasture Sire: *ES ZX75* from 6-17 to 7-8-15



28

ES B62

Black Dbl Polled 1/2 SM 1/2 AN ASA#2899668

Connealy Product 568
Connealy Final Product
Ebonista Of Conanga 471
SAS T101 Sweet Meat
ES X34
EST55

What we really like about the Final Product cattle is the amount of capacity they have through their middle 1/3 and high maternal traits. And this girl fits right in with a bit more eye appeal. Her dam's 1st three calves had a BW ratio of 112 and WW ratio of 103. Bred to Hook's Broadway, an impressive individual that only got better when his ultrasound data came back to push him over the top.

BD: 3-25-14 Tattoo: B62 Adj BW: 84 Adj WW: 627

CE	BW	WW	YW	MCE	Milk	MWW	Stay	DOC	CW	YG	Marb	BF	REA	API	TI
10	.0	66	105	9	28	61	*	10.9	32.3	-.07	.39	.018	.65	129	73

A.I. Sire: Hooks Broadway 11B on 5-12-15 • Safe to AI
EPDs: 11 -.75 64 100 10 27 59 * 10.85
Carcass: 28.6 -.25 .41 -.02 .89 136 74
Pasture Sire: ES ZX75 from 6-17 to 7-8-15

29

ES B66

Black Dbl Polled Purebred ASA#2899671

BD: 3-30-14 Tattoo: B66 Adj BW: 70 Adj WW: 536

CE	BW	WW	YW	MCE	Milk	MWW	Stay	DOC	CW	YG	Marb	BF	REA	API	TI
11	-1.3	53	82	11	26	52	*	10.4	17.3	-.32	.17	-.044	.73	127	64

Mr. NLC Upgrade U8676
Gibbs 0689X Crimson Tide
SSF Blk Lucy S727
ES Black Dragon PL1
ES W90
ESP24

A low birth, high maternal individual with a lot of spring of rib. Crimson Tide is a bull we used several years ago and when I evaluated the calves before A.I'ing, every cow that had a Crimson Tide calf at side I wrote down to breed her back to Crimson Tide. I believe she is the only one bred to PVF Insight in the sale but they were our favorite Angus sired group last summer. Dam had a \$20,000 bull for us in 2012.

A.I. Sire: PVF Insight 0129 on 5-11-15 • Safe to AI
EPDs: 15 -1.65 62 103 10 27 57 * 11.4
Carcass: 29.0 -.19 .37 -.02 .71 137 73
Pasture Sire: ES ZX75 from 6-17 to 7-8-15



ES YW90, Half Sib



30

ES B69

Red Dbl Polled 1/2 SM 1/2 AR ASA#2899818

BD: 4-3-14 Tattoo: B69 Adj BW: 66 Adj WW: 589

CE	BW	WW	YW	MCE	Milk	MWW	Stay	DOC	CW	YG	Marb	BF	REA	API	TI
14	-2.7	68	101	11	27	61	*	7.1	25.8	-.28	.29	-.034	.80	144	77

WS Beef King W107
Hook's Yukon 80Y
Hooks Mika 141M
Lchmn Red Spread 1271F
EIR T223
EIR M212

This Sim/Red Angus thing is just starting to take off. For years a lot of folks have done the Sim/Angus mating, we had several bull customers asking for the Sim/Red Angus. Well, as you would expect they are extremely satisfied and the demand is exceeding supply. Her dam, T223, has a WW ratio of 102 on her 1st six calves.

A.I. Sire: W/C Lock Down 206Z on 5-8-15 • Safe to AI
EPDs: 15 -2.1 71 116 11 22 58 * 8.95
Carcass: 35.8 -.18 .40 -.01 .78 151 80
Pasture Sire: ES ZX75 from 6-17 to 7-8-15





31

ES B65

Black Dbl Polled 1/2 SM 1/2 AN ASA#2899684

BD: 3-29-14 Tattoo: B65 Adj BW: 56 Adj WW: 539

CE	BW	WW	YW	MCE	Milk	MWW	Stay	DOC	CW	YG	Marb	BF	REA	API	TI
12	-.3	71	118	4	24	60	*	10.3	40.2	-.02	.58	.020	.59	131	81

TNT Tuition U238
W/C United 956Y
Miss Werning 956W
TJ High Bet 236X
ES Z27
ES X103

The United females need no introduction. He is one of the breeds premier sires for adding growth yet maintaining adequate calving ease. We calved our first United heifers last spring and we weren't disappointed, they look to make excellent cows.

A.I. Sire: W/C Lock Down 206Z on 5-3-15
Safe to AI
EPDs: 14 -.9 73 124 7 20 57 * 10.55
Carcass: 43.0 -.05 .54 .01 .67 141 82
Pasture Sire: ES ZX75 from 6-17 to 7-8-15



32

ES B70

Black Hetero Polled 3/4 SM 3/16 AN 1/16 AR ASA#2899622

BD: 4-3-14 Tattoo: B70 Adj BW: 81 Adj WW: 632

CE	BW	WW	YW	MCE	Milk	MWW	Stay	DOC	CW	YG	Marb	BF	REA	API	TI
9	1.5	71	123	6	23	58	*	8.03	45.9	-.24	.17	-.037	.90	114	71

Remington Lock N Load 54U
ES Surelock ZW15
ES W15
ESTL30
ES W7
EST67

Another soggy middled Surelock female out of W7, who raised our #1 WDA bull two years ago. B70 ratioed 102 for BW then on to 108 for WW, that's the growth curve we like to see.

A.I. Sire: Hook's Yellowstone 97Y on 5-2-15 • Safe to AI
EPDs: 12 .65 68 112 8 24 58 * 9.9
Carcass: 37.7 -.33 .28 -.05 .93 133 74
Pasture Sire: ES ZX75 from 6-17 to 7-8-15



33

ES B73

Black Brockle Dbl Polled 3/4 SM 1/4 AN ASA#2899685

BD: 4-7-14 Tattoo: B73 Adj BW: 79 Adj WW: 528

CE	BW	WW	YW	MCE	Milk	MWW	Stay	DOC	CW	YG	Marb	BF	REA	API	TI
12	.4	61	105	11	19	49	*	10.2	33.5	-.40	.10	-.060	1.06	123	65

Remington On Target 2S
Remington Lock N Load 54U
Bar 15 Miss Knight 78E-51G
O C C Prototype 847P
ES W59
ESS55

This Lock N Load female comes highly recommended, she is a very impressive individual not only from her physical presence but her maternal side of the pedigree. Her dam was our #1 favorite heifer when she was a bred heifer back in 2010, then didn't let us down as a cow scoring a 10 on udder quality every year when she calves. A full brother sold in last year's bull sale for \$9000.

A.I. Sire: Hook's Yellowstone 97Y on 5-12-15 • Safe to AI
EPDs: 13 .1 63 103 10 22 54 * 10.85
Carcass: 31.5 -.41 .24 -.06 1.01 137 70
Pasture Sire: ES ZX75 from 6-17 to 7-8-15



ES AW59, Full Brother



CCR Ms. Snapple
9063W, Maternal
Grandam

34 ES B77 ASA#2899656
Homo Black Baldy Homo Polled 3/4 SM 1/4 AN

BD: 4-23-14 Tattoo: B77 Adj BW: 89 Adj WW: 591

CE	BW	WW	YW	MCE	Milk	MWW	Stay	DOC	CW	YG	Marb	BF	REA	API	TI
10	2.8	83	135	8	16	57	*	11.4	54.2	-.20	.37	-.024	.97	130	80

TNT Tuition U238
W/C United 956Y
Miss Werning 956W
Ellingson Legacy M229
ES Y8
CCR Ms. Snapple 9063W

I don't know about you, but this is the first and only blaze faced United ever born here, and she's easy on the eyes. So help yourself to this rare opportunity as she also ranks in the top 1% of the breed for WW & YW EPDs. I also have a good feeling about her Dew It Right mating.

A.I. Sire: *Welshs Dew It Right 067T on 5-3-15 Safe to AI*
EPDs: 13 1.7 73 108 9 16 53 * 12.9
Carcass: 36.35 -.30 .26 -.04 .90 136 73
Pasture Sire: *ES ZX75 from 6-17 to 7-8-15*

35 ES B74 ASA#2899819
Red Dbl Polled 1/2 SM 1/2 AR

BD: 4-4-14 Tattoo: B74 Adj BW: 87 Adj WW: 660

CE	BW	WW	YW	MCE	Milk	MWW	Stay	DOC	CW	YG	Marb	BF	REA	API	TI
7	2.6	85	134	5	21	63	*	12.1	53.6	-.13	.07	-.022	.78	100	73

NF Trump S582
CDI Authority 77X
CDI Ms. Crockett 88T
WR Mr. Red Dawg 5335
EIR X213
EIR T223

If you want to step up your Sim/Red Angus program this girl is a step in the right direction. Ratioed 113 for WW then boasts some WW and YW EPDs that rank her in the top 1% of the breed. Her dam's 1st three calves have a WW ratio of 111. Like they all say, I shouldn't be selling this one or that one for whatever reason, that's the case here because CDI Authority is deceased and unless you have semen in the tank or know someone, there is no more.

A.I. Sire: *W/C Lock Down 206Z on 5-10-15 • Safe to AI*
EPDs: 12 .55 80 132 8 19 58 * 11.45
Carcass: 49.7 -.11 .29 -.01 .77 129 79
Pasture Sire: *ES ZX75 from 6-17 to 7-8-15*



36 ES B76 ASA#2899820
Red Dbl Polled 1/2 SM 1/2 AR

BD: 4-14-14 Tattoo: B76 Adj BW: 80 Adj WW: 539

CE	BW	WW	YW	MCE	Milk	MWW	Stay	DOC	CW	YG	Marb	BF	REA	API	TI
6	2.5	68	106	3	20	54	*	*	36.6	-.23	.33	-.034	.79	103	70

NF Trump S582
CDI Authority 77X
CDI Ms. Crockett 88T
Badlands Net Worth 23U
EIR Y207
EIR U204

The hottest combination at our place has been Authority X Red Angus. The commercial cattlemen absolutely love the bulls last spring. Nine Authority sons averaged over \$9,200. Personally, I feel the best is yet to come, when we get the females into production. Authority is sired by Trump out of a Crockett cow and both have made excellent females here.

A.I. Sire: *GLS New Direction X184 on 5-11-15 • Safe to AI*
EPDs: 7 1.05 61 94 4 20 50 * *
Carcass: 27.4 -.30 .08 -.04 .81 100 62
Pasture Sire: *ES ZX75 from 6-17 to 7-8-15*





ES AY83,
Maternal Brother

37

ES B82

Black Dbl Polled 1/2 SM 1/4 AN 1/4 AR ASA#2899751

B C Lookout 7024
HS Battle Cry X297K
HHSF Black Glitter
GLS Unmatched U62
ES Y83
EIR W206

This female is sired by HS Battle Cry, a full sib to the high dollar BC Lookout X Glitter females to sell at Hilbrand's the last few years. Then bred to J Bar J Nightride makes for a nice outcross calf. This is her dam's 2nd calf, her first was a bull that sold for \$9,000 to Mark Heeren.

BD: 5-11-14 Tattoo: B82 Adj BW: 87 Adj WW: 576

CE	BW	WW	YW	MCE	Milk	MWW	Stay	DOC	CW	YG	Marb	BF	REA	API	TI
12	.2	62	93	7	23	54	*	10.5	25.7	-.20	.28	-.033	.56	117	67

A.I. Sire: J Bar J Nightride 225Z on 5-12-15

Safe to AI

EPDs: 17 -2.5 57 98 10 27 55 * 11.7

Carcass: 25.05 -.19 .57 -.02 .63 161 77

Pasture Sire: ES ZX75 from 6-17 to 7-8-15



THE HEALY FAMILY

38

KGH Miss Epic 3180A

Black Dbl Polled 5/8 SM 3/4 AN ASA#3018594

Mr. NLC Upgrade U8676
JF Epic 1206Y
JF Latisha 5153R
B C Lookout 7024
KGH Miss Lookout 9157W
K Healy Cow 757G

Anyone who has a BC Lookout cow knows how good they are. This one we have is a really nice cow. Epic put the total package together here, with EPDs and look to go along with them.

BD: 12-2-13 Tattoo: 3180A Adj BW: 79 Adj WW: 658

CE	BW	WW	YW	MCE	Milk	MWW	Stay	DOC	CW	YG	Marb	BF	REA	API	TI
9	2.1	75	109	7	23	61	*	10.3	37.6	-.31	.32	-.060	.83	118	75

A.I. Sire: SS/PRS Tail Gater 621Z on 4-29-15 • Bull

EPDs: 10 1.75 72 103 8 22 58 * 10.75

Carcass: 33.6 -.31 .21 -.05 .82 123 71



Val

39

KGH Miss Epic 3193A
Black Polled 1/2 SM 1/2 AN ASA#3018597

BD: 12-7-13 Tattoo: 3193A Adj BW: 84 Adj WW: 504

CE	BW	WW	YW	MCE	Milk	MWW	Stay	DOC	CW	YG	Marb	BF	REA	API	TI
7	1.9	51	74	3	25	50	*	8.8	17.2	-.33	.36	-.047	.75	103	61

Mr. NLC Upgrade U8676

JF Epic 1206Y

JF Latisha 5153R
B C Marathon 7022

795T

K Healy Cow 5332

This F1 heifer is really made nice. Being out of Epic and bred to Tail Gater, this calf should do very well down the road.

A.I. Sire: SS/PRS Tail Gater 621Z on 4-29-15 • Bull
EPDs: 9 1.65 60 86 6 23 52 * 10.0
Carcass: 23.4 -.32 .23 -.05 .78 114 65

40

KGH Miss Epic 3187A
Black Dbl Polled Purebred ASA#3018595

BD: 12-5-13 Tattoo: 3187A Adj BW: 75 Adj WW: 651

CE	BW	WW	YW	MCE	Milk	MWW	Stay	DOC	CW	YG	Marb	BF	REA	API	TI
11	.8	56	85	9	27	55	15	10.8	21.6	-.38	.26	-.068	.80	121	69

Mr. NLC Upgrade U8676

JF Epic 1206Y

JF Latisha 5153R
3C Target T7016 B

KGH Miss Target 954W

KGH Miss John 7115T

This purebred heifer is an easy keeping heifer we are bringing. Her 3C Target dam is built the same way, easy keeping, so it's in the genetics. Her dam also has a picture perfect udder. We have not calved any Tail Gaters on the farm but have heard good things about him.

A.I. Sire: SS/PRS Tail Gater 621Z on 4-5-15 • Heifer

EPDs: 11 1.1 63 91 9 24 55 19 11.0

Carcass: 25.6 -.34 .18 -.06 .81 125 70



Val

41

KGH Miss Epic 3191A
Black Polled 5/8 SM 3/8 AN ASA#3018596

BD: 12-6-13 Tattoo: 3191A Adj BW: 83 Adj WW: 624

CE	BW	WW	YW	MCE	Milk	MWW	Stay	DOC	CW	YG	Marb	BF	REA	API	TI
11	1.5	59	88	8	29	59	*	8.8	24.7	-.28	.27	-.051	.64	117	65

Mr. NLC Upgrade U8676

JF Epic 1206Y

JF Latisha 5153R
Dalebanks Extender 6012

KGH Miss Extender 28M

KGH Highway 086K

Probably shouldn't sell this heifer, with a great genetic background. Her dam is a Dalebanks Extender daughter out of Steve Reimers good Highwayman 33T. 3191 has a nice front end and also has that balanced look to her.

A.I. Sire: SS/PRS Tail Gater 621Z on 4-5-15 • Unknown

EPDs: 11 1.45 64 93 8 25 57 * 10.0

Carcass: 27.15 -.29 .18 -.05 .73 123 67



JF Epic 1206Y, Sire



42

KGH Miss Utah 3201A

Black Blaze Dbl Polled Purebred ASA#3018590

GCC Hard As Steel 144W
Yardley Utah Y361
Miss Yardley T170
STF Confirmed U44L
STF Why Not YT40
STF Miss ST40

We bought the dam from STF and here is her Utah heifer. We had the first Utah heifer calf this spring. They milk heavier then what it says on their EPDs. 3201 has a real nice look to her also.

BD: 12-11-13 Tattoo: 3201A Adj BW: 88 Adj WW: 656

CE	BW	WW	YW	MCE	Milk	MWW	Stay	DOC	CW	YG	Marb	BF	REA	API	TI
9	2.0	68	100	9	10	44	*	11.8	32.5	-.23	.24	-.035	.71	121	68

A.I. Sire: SS/PRS Tail Gater 621Z on 4-5-15 • Bull
EPDs: 10 1.7 68 99 9 15 49 * 11.5
Carcass: 31.05 -.27 .17 -.04 .76 121 67



43

KGH Miss Beyond 3197A

Black Polled 3/4 SM 1/4 AN ASA#3018589

3C Macho M450 BZ
GCF Beyond
GCF Miss MT-Zel
Hoibys Viper R535
KSR 184T
K R Stockman 114P

A.I. Sire: SS/PRS Tail Gater 621Z on 4-4-15 • Heifer
EPDs: 10 .7 58 83 8 22 51 18 11.35
Carcass: 20.4 -.33 .13 -.06 .73 118 66

BD: 12-8-13 Tattoo: 3197A Adj BW: 74 Adj WW: 611

CE	BW	WW	YW	MCE	Milk	MWW	Stay	DOC	CW	YG	Marb	BF	REA	API	TI
8	0	47	69	8	24	47	14	11.5	11.2	-.36	.17	-.063	.64	107	61

She is really thick, genetics that come from her dam. She was bought on Kube Ranch Dispersal and worked nicely for us. Being out of Beyond just makes it work even better.



44

KGH Miss Epic 3198A

Black Dbl Polled 3/4 SM 1/4 AN ASA#3018598

Mr. NLC Upgrade U8676
JF Epic 1206Y
JF Latisha 5153R
WAR Hall of Fame 8023
KGH Miss Hall 938W
KGH Miss Dream 7145T

A.I. Sire: S D S Graduate 006X on 4-24-15 • Heifer
EPDs: 15 -2.45 58 94 11 22 51 * 12.9
Carcass: 22.75 -.38 .31 -.05 .97 144 71

BD: 12-8-13 Tattoo: 3198A Adj BW: 80 Adj WW: 502

CE	BW	WW	YW	MCE	Milk	MWW	Stay	DOC	CW	YG	Marb	BF	REA	API	TI
11	.8	58	90	10	24	53	*	11.3	24.5	-.37	.31	-.068	.80	131	68

If you look at Epic's EPDs, you'll see he covers about all of them, if you like big EPDs. This daughter is moderate framed. Bred to Graduate, she should make a pretty nice calf.



45 KGH Miss Epic 3210A
 Black Dbl Polled Purebred ASA#3018591

BD: 12-17-13 Tattoo: 3210A Adj BW: 82 Adj WW: 770

CE	BW	WW	YW	MCE	Milk	MWW	Stay	DOC	CW	YG	Marb	BF	REA	API	TI
9	2.6	79	117	9	23	63	19	10.8	42.7	-.32	.23	-.068	.85	129	79

Mr. NLC Upgrade U8676
 JF Epic 1206Y
 JF Latisha 5153R
 3C Target T7016 B
 KGH Miss Target 022X
 KGH Miss Lane 554R

This Epic heifer goes back to a powerful cow family. 3C Target is the sire of her dam. If you're into EPDs, these numbers are hard to beat. She has a lot of performance in a moderate frame.

A.I. Sire: SS/PRS Tail Gater 621Z on 4-5-15 • Heifer
 EPDs: 10 2.0 74 107 9 22 59 20 11.0
 Carcass: 36.15 -.31 .16 -.06 .83 129 75

46 KGH Miss Epic 3217A
 Black Dbl Polled 3/4 SM 1/4 AN ASA#3018585

BD: 12-20-13 Tattoo: 3217A Adj BW: 85 Adj WW: 709

CE	BW	WW	YW	MCE	Milk	MWW	Stay	DOC	CW	YG	Marb	BF	REA	API	TI
9	2.1	73	103	7	18	54	17	9.9	33.8	-.32	.33	-.059	.84	128	78

Mr. NLC Upgrade U8676
 JF Epic 1206Y
 JF Latisha 5153R
 CNS Dream On L186
 KGH Miss Dream 639W
 795T

939, the dam of 3217, is also the dam of two past sale heifers. 939 is one of the deepest cows we have and this heifer may grow up and be even better because she is out of Epic. Really good numbers on this heifer also.

A.I. Sire: SS/PRS Tail Gater 621Z on 4-4-15 • Heifer
 EPDs: 10 1.75 71 100 8 19 55 19 10.55
 Carcass: 31.7 -.31 .21 -.05 .83 128 74



47 KGH Miss Utah 3223A
 Black Dbl Polled 5/8 SM 3/8 AN ASA#3018586

BD: 12-22-13 Tattoo: 3223A Adj BW: 80 Adj WW: 562

CE	BW	WW	YW	MCE	Milk	MWW	Stay	DOC	CW	YG	Marb	BF	REA	API	TI
9	1.7	52	78	7	16	42	*	11.8	19.2	-.32	.30	-.042	.77	111	60

GCC Hard As Steel 144W
 Yardley Utah Y361
 Miss Yardley T170
 STF Seymour Butts TU51
 KGH Miss Seymour 05X
 KGH Miss Line 6101S

This heifer goes back to Seymour Butts on the dam side. He was a former Denver Pen of Three Champion that left us a bunch of great females.

A.I. Sire: MCM Top Grade 018X on 4-4-15 • Heifer
 EPDs: 9 .25 55 87 9 23 50 * 10.95
 Carcass: 22.45 -.37 .46 -.06 .87 126 69





48

KGH Miss Beyond 3215A

Black Baldy Dbl Polled Purebred ASA#3018593

3C Macho M450 BZ
 GCF Beyond
 GCF Miss MT-Zel
 CNS Dream On L186
 KGH Miss Dream 651S
 KGH Miss Exclusive 2115M

This heifer is probably my favorite one. She is really pretty to look at and comes from a powerful cow family. Nick Sloup in Seward, NE, bought one like her a few years back.

BD: 12-20-13 Tattoo: 3215A Adj BW: 90 Adj WW: 669

CE	BW	WW	YW	MCE	Milk	MWW	Stay	DOC	CW	YG	Marb	BF	REA	API	TI
6	2.6	61	82	9	18	49	24	11.3	21.9	-.34	.11	-.072	.66	120	64

A.I. Sire: SS/PRS Tail Gater 621Z on 4-4-15 • Bull
 EPDs: 9 2.0 65 90 9 19 52 23 11.25
 Carcass: 25.75 -.32 .10 -.06 .74 124 67



49

KGH Miss Beyond 3216A

Black Dbl Polled Purebred ASA#3018584

3C Macho M450 BZ
 GCF Beyond
 GCF Miss MT-Zel
 Mr. NLC Jet Stream N387
 KGH Miss Jet 6146S
 KGH Miss Exclusive 2146M

Beyond is the best bull we have had walk our pastures. He's getting pretty close to being done here. He is going to be 10 years old next year. His daughters will keep his genetics going in our herd. This heifer is going to make a really nice cow for the new owners. Her Jet Stream dam is also top shelf!

BD: 12-20-13 Tattoo: 3216A Adj BW: 83 Adj WW: 641

CE	BW	WW	YW	MCE	Milk	MWW	Stay	DOC	CW	YG	Marb	BF	REA	API	TI
1	2.4	55	74	5	21	49	*	10.8	17.5	-.31	.11	-.059	.59	84	55

A.I. Sire: SS/PRS Tail Gater 621Z on 4-4-15 • Heifer
 EPDs: 6 1.9 62 86 7 21 52 * 11.0
 Carcass: 23.55 -.31 .10 -.05 .70 103 61



50

KGH Miss Utah B420

Black Baldy Dbl Polled Purebred ASA#3018588

GCC Hard As Steel 144W
 Yardley Utah Y361
 Miss Yardley T170
 GCF Beyond
 KGH Miss Beyond 0104X
 KGH Miss Dragon 720T

If you want a baldy heifer that's pretty fronted and probably the sleeper of the group we are bringing, she may be it! She was bred naturally by Epic. Epic bred 15 heifers for us to calve in 2015, we helped one. He calves 10 days early.

BD: 1-4-14 Tattoo: B420 Adj BW: 82 Adj WW: 650

CE	BW	WW	YW	MCE	Milk	MWW	Stay	DOC	CW	YG	Marb	BF	REA	API	TI
7	1.9	70	100	8	10	45	*	11.2	31.6	-.28	.18	-.049	.74	115	67

Natural Sire: JF Epic 1206Y on 4-16-15 • Bull
 EPDs: 8 2.25 72 103 8 20 55 * 11.45
 Carcass: 34.1 -.35 .24 -.07 .89 118 71

Yardley Utah Y361, Sire



51

KGH Miss Ice B439 ASA#3018580
Black Dbl Polled 3/4 SM 3/16 AN 1/16 CS

BD: 1-11-14 Tattoo: B439 Adj BW: 81 Adj WW: 587

CE	BW	WW	YW	MCE	Milk	MWW	Stay	DOC	CW	YG	Marb	BF	REA	API	TI
6	2.2	69	96	4	25	59	*	11.6	29.6	-.26	.20	-.053	.63	106	68

R&R Chamberlain X744
JF Chamberlain 219Z
SOSF Ebony's Joy L-123
STF Seymour Butts TU51
KGH Miss Seymour 027X
KGH Miss Lucky 6191S

If you want some Joy breeding in your heifer, this Chamberlain Joy daughter is going to make a really nice cow for the new owners. Her dam 027 is a Seymour Butts cow. Powerful cow family here!

A.I. Sire: MCM Top Grade 018X on 4-28-15 • Heifer
EPDs: 8 .5 64 96 7 27 59 * 10.85
Carcass: 27.65 -.34 .41 -.06 .80 125 73

52

KGH Miss Image B450 ASA#3018582
Black Dbl Polled 5/8 SM 3/8 AN

BD: 1-17-14 Tattoo: B450 Adj BW: 89 Adj WW: 582

CE	BW	WW	YW	MCE	Milk	MWW	Stay	DOC	CW	YG	Marb	BF	REA	API	TI
9	2.1	73	112	9	18	55	*	13.3	39.6	-.09	.33	-.016	.52	121	72

Dikemans Sure Bet
TJ Sharper Image 809U
T J Miss Bando S27
STF Prevalent X509
KGH Miss Maria 27Z
KGH Miss Dream 639W

This Sharper Image heifer was bred to our bull we bought for the heifers. He's a really nice Goldmine son from Goeken Cattle. 450 will make a really nice cow in the future.

Natural Sire: JMG Mine 274B on approx. 4-29-15 • Unknown
EPDs: 10 1.25 62 90 8 20 51 * 11.65
Carcass: 24.85 -.23 .21 -.03 .64 115 65



53

KGH Miss BR B483 ASA#3018575
Black Dbl Polled 3/4 SM 1/4 AN

BD: 2-9-14 Tattoo: B483 Adj BW: 89 Adj WW: N/A

CE	BW	WW	YW	MCE	Milk	MWW	Stay	DOC	CW	YG	Marb	BF	REA	API	TI
7	2.5	60	82	8	18	48	*	10.0	22.1	-.29	.22	-.055	.62	110	62

GCF Beyond
KGH Beyond Reality 0141X
KGH Miss Line 661S
CNS Dream On L186
KGH Miss Dream 7150T
K Healy Cow 360C

B483 is out of Beyond Reality, which we sold to Nielsen Livestock. We kept an interest in this bull to use. He had a nice show career and is very impressive to look at. Should be an easy keeper type cow.

A.I. Sire: MCM Top Grade 018X on 4-5-15 • Heifer
EPDs: 8 .65 59 89 9 23 53 * 10.05
Carcass: 23.9 -.36 .42 -.06 .79 128 70





54

KGH Miss Utah B452 ASA#3018583
Black Baldy Dbl Polled 3/4 SM 3/16 AN 1/16 MX

BD: 1-17-14 Tattoo: B452 Adj BW: 86 Adj WW: 548

CE	BW	WW	YW	MCE	Milk	MWW	Stay	DOC	CW	YG	Marb	BF	REA	API	TI
6	2.5	60	89	7	16	46	*	10.7	26.4	-.25	.24	-.034	.72	107	62

GCC Hard As Steel 144W
 Yardley Utah Y361
 Miss Yardley T170
 Mr. NLC Jet Stream N387
 KGH Miss Jet 8169U
 KGH 600 910J

452 is a baldy that catches your eye. The reason for that is 8169 is the dam, a NLC Jet Stream, their high seller a few years ago. Made really nice and productive cows.

A.I. Sire: SS/PRS Tail Gater 621Z on 4-23-15 • Heifer
 EPDs: 9 1.95 65 9 8 18 51 * 10.95
 Carcass: 28.0 -.28 .17 -.04 .77 115 65



55

KGH Miss Epic 4125B ASA#3018576
Black Dbl Polled 3/4 SM 1/4 AN

BD: 3-1-14 Tattoo: 4125B Adj BW: 79 Adj WW: N/A

CE	BW	WW	YW	MCE	Milk	MWW	Stay	DOC	CW	YG	Marb	BF	REA	API	TI
9	.8	61	93	8	30	60	*	11.9	26.7	-.38	.26	-.076	.80	116	67

Mr. NLC Upgrade U8676
 JF Epic 1206Y
 JF Latisha 5153R
 Lemmon Newline C804
 KGH Miss Line 661S
 KGH Miss Powerline 239M

Epic is the future here for making cows that do a lot of things right. This heifer's dam is also the dam of Beyond Reality. Can't go wrong here. Being bred to Tail Gater, I would think that can't miss!

A.I. Sire: SS/PRS Tail Gater 621Z on 4-3-15 • Bull
 EPDs: 10 1.1 65 95 8 25 58 * 11.55
 Carcass: 28.15 -.34 .18 -.06 .81 122 68



56

KGH Miss Image B429 ASA#3029333
Black Dbl Polled 3/8 SM 1/2 AN 1/8 CS

BD: 1-6-14 Tattoo: B429 Adj BW: 79 Adj WW: N/A

CE	BW	WW	YW	MCE	Milk	MWW	Stay	DOC	CW	YG	Marb	BF	REA	API	TI
11	.5	75	117	10	26	63	*	12.6	40.3	-.01	.34	-.004	.39	124	75

Dikemans Sure Bet
 TJ Sharper Image 809U
 T J Miss Bando S27
 SP The Answer 813
 KGH Miss Answer 1216Y
 KGH Miss Seymour 015X

This low percentage heifer is as feminine and angular as I would want one. She really profiles nice. Out of a first calf heifer that did a nice job here with her first calf.

A.I. Sire: SS/PRS Tail Gater 621Z on 4-25-15 • Heifer
 EPDs: 11 .95 72 107 9 23 59 * 11.9
 Carcass: 34.95 -.16 .22 -.03 .60 123 71



57

KGH Miss Epic 4129B ASA#3018577
 Black Baldy Dbl Polled 3/4 SM 1/8 AN 1/8 MX

Mr. NLC Upgrade U8676
 JF Epic 1206Y
 JF Latisha 5153R
 Mr. NLC Jet Stream N387
 KGH Miss Jet 8120U
 KGH Miss Dice 2111M

Miss Epic is the youngest of our group going to the Dakota Made Sale. Her dam also goes back to Jet Stream, who left us a lot of really good cows.

BD: 3-3-14 Tattoo: 4129B Adj BW: 90 Adj WW: N/A

CE	BW	WW	YW	MCE	Milk	MWW	Stay	DOC	CW	YG	Marb	BF	REA	API	TI
5	2.4	62	92	6	27	58	*	10.1	28.3	-.33	.24	-.056	.83	107	65

A.I. Sire: SS/PRS Tail Gater 621Z on 4-4-15 • Heifer
 EPDs: 8 1.9 65 95 7 24 57 * 10.65
 Carcass: 28.95 -.32 .17 -.05 .82 114 66



58

Oval F Miss Comfort B402 ASA#2834100
 Black Dbl Polled Purebred

Ellingson Legacy M229
 GW Comfort Zone 651Y
 GW Miss Prem Beef 984W
 Oval F Ringleader R579
 Oval F Ms. Ringleader Z205
 Westfall Inspiration

Good numbered female here in a moderate frame. Packing a strong family tree with genetics that are proven in the breed to be profit makers.

BD: 1-10-14 Tattoo: B402 Adj BW: 57 Adj WW: 624

CE	BW	WW	YW	MCE	Milk	MWW	Stay	DOC	CW	YG	Marb	BF	REA	API	TI
14	-1.9	50	74	9	22	47	*	13.0	11.4	-.46	.15	-.067	.92	133	62

A.I. Sire: LLSF Addiction AY792 on 5-23-15 • Bull
 EPDs: 10 .1 57 86 9 22 50 * 11.1
 Carcass: 21.5 -.40 .24 -.06 .91 126 66



KARIE SIMMENTALS



Mr. HOC Broker, Sire of Lots 59 & 60

59 **PTK Brokers Queen B334**
Homo Black Homo Polled Purebred ASA#2890737

BD: 3-24-14 Tattoo: B334 Adj BW: 88 ET Adj WW: 680

CE	BW	WW	YW	MCE	Milk	MWW	Stay	DOC	CW	YG	Marb	BF	REA	API	TI
4	4.2	64	92	5	16	48	21	10.1	30.6	-29	-13	.069	.61	97	57

A.I. Sire: CSCX Bandwagon 513A on 6-14-15 • Bull • Safe

EPDs: 4 4.1 67 94 6 16 49 * 9.95 Carcass: 31.35 -.20 -.01 -.04 .57 87 57

Pasture Sire: I80 son

SVF Steel Force S701
Mr. HOC Broker
JM BF H25
SAC Mr. MT 73G
SVJ Saharas Queen
S&S Sahara

Brokers Queen is packing a lineage second to none. Broker, Steel Force, MT along with the fine ladies of H25, Saharas Queen proves that she will be a strong producer for years to come. Retaining one flush at the buyers convenience. Minimum of 6 # 1 embryos with work done by a certified embryologist.



GF/HS Miley X243, Dam

60 **PTK Cream B328**
Hetero Black Homo Polled Purebred ASA#2890732

BD: 3-19-14 Tattoo: B328 Adj BW: 78 ET Adj WW: 617

CE	BW	WW	YW	MCE	Milk	MWW	Stay	DOC	CW	YG	Marb	BF	REA	API	TI
2	4.2	57	83	3	19	47	*	7.5	25.5	-.34	-.12	-.081	.61	67	49

SVF Steel Force S701
Mr. HOC Broker
JM BF H25
Sandeens SOS
GF/HS Miley X243
SS Sweet Dreams P31

Chrome and Banners, she has both. Powerful genetics with Steel Force, Broker, SOS and Miley with a twist of I-80 thrown in!

A.I. Sire: Goet I80 on 8-10-15

EPDs: 8 1.35 49 68 4 19 43 * 11.15

Carcass: 12.15 -.25 -.04 -.07 .30 78 49



61 **PTK Blind Faith B326**
Hetero Black Homo Polled Purebred ASA#2890734

BD: 3-22-14 Tattoo: B326 Adj BW: 86 Adj WW: 640

CE	BW	WW	YW	MCE	Milk	MWW	Stay	DOC	CW	YG	Marb	BF	REA	API	TI
10	2.1	65	92	2	17	50	*	7.8	27.2	-.28	.17	-.038	.79	110	65

LBS The Foreman 702T
Rubys Wide Open 909W
Rubys Miss Cleo S601
CNS Dream On L186
SS Ebony's Dream Child
SOSF Ebony's Joy L-123

Blind Faith is carrying the progeny of the popular Upgrade and with her genetic lineup of Wide Open with Dream Child, expect fine things from this female. Retaining one flush at the buyers convenience. Minimum of 6 # 1 embryos with work done by a certified embryologist.

A.I. Sire: Mr. NLC Upgrade U8676 on 6-13-15

EPDs: 9 2.2 74 108 4 19 56 * 10.35

Carcass: 37.3 -.46 .35 -.08 1.16 122 76



SS Ebony's Dream Child, Dam

This sale will be broadcast live on the internet!

DVAuction
Broadcasting Real-Time Auctions

Justin Dikoff
605-290-0635

62

PTKB683

Black Polled 1/2 SM 1/4 AR 1/4 GV ASA#2916039

BD: 4-18-14 Tattoo: B683 Adj BW: 83 Adj WW: 567

CE	BW	WW	YW	MCE	Milk	MWW	Stay	DOC	CW	YG	Marb	BF	REA	API	TI
8	2.6	54	72	3	20	46	*	*	16.2	-.23	-.04	-.073	.21	84	51

AJE/HS/MBCC Silversmith
PTK Silverking Z240
SVJ Saharas Queen

683

B683 is a Foundation Simmental female ready to work for you. She is a granddaughter of the American Royal Champion Simmental bull Silversmith and carrying the services of CSCX Bandwagon.

A.I. Sire: CSCX Bandwagon 513A on 6-4-15
EPDs: 6 3.3 61 83 5 18 48 * *
Carcass: 24.15 -.17 .04 -.04 .37 86 56
Pasture Sire: 180 Son • Safe



63

PTKB04

Black Polled 1/2 SM 1/4 AN 1/4 HP ASA#2916025

BD: 4-8-14 Tattoo: B04 Adj BW: 74 Adj WW: 564

CE	BW	WW	YW	MCE	Milk	MWW	Stay	DOC	CW	YG	Marb	BF	REA	API	TI
9	1.5	52	69	3	20	46	*	*	12.8	-.24	-.04	-.073	.21	89	51

AJE/HS/MBCC Silversmith
PTK Silverking Z240
SVJ Saharas Queen

4

Out of my clean up sire and really believe he has a great future, he produces great conformation and pounds. We had a 1000# 205 day bull calf out of him this year.

A.I. Sire: LLSF Addiction AY792 on 6-14-15 • Heifer • Safe
EPDs: 8 1.8 58 83 6 21 50 * *
Carcass: 22.2 -.29 .14 -.06 .56 100 59
Pasture Sire: 180 son



64

B939

Black Baldy Commercial

BD: April 2014 Tattoo: B939 Adj BW: N/A Adj WW: N/A

Simmental x Red Angus

Two baldies that I should produce a great club calf.

A.I. Sire: Goet 180 on 6-14-15
Pasture Sire: 180 Son • Safe



Goet 180, AI Sire



64

65

B926

Black Baldy Commercial

BD: April 2014 Tattoo: B926 Adj BW: N/A Adj WW: N/A

Simmental x Red Angus

A.I. Sire: Goet 180 on 6-13-15 • Safe
Pasture Sire: 180 Son



We invite you to the Dakota Made Sale on December 7th!

RED ANGUS



EIR P207, Maternal Grandam

66

EIR B204

Purebred Red Angus REG#1700708

BD: 3-8-14 Tattoo: B204 Adj BW: 84 Adj WW: 601

CED	BW	WW	YW	Milk	TM	HPG	CEM	Stay	Marb	YG	CW	REA	Fat
2	-.2	73	122	12	4	9	2	17	.48	.13	42	.03	.00

Beckton Nebula P P707
Brown JYJ Redemption Y1334
JYJ Ms. Jolene W16
Red 6 Mile Full Throttle 171T
EIR Y217
EIR P207

If you like them pretty, this is the one. She has the same look as her dam and grandam. She also offers some great growth EPDs ranking in the top 10% and 4% of the breed for WW & YW. Then bred to Conquest, he is a bull that has always worked well on heifers, yet the bulls have the ability to top a bull sale.

A.I. Sire: HXC Conquest 4405P on 5-12-15
Safe to AI
EPDs: 10 -.30 67 112 19 3 1 3 15
Carcass: .58 .12 .32 .11 .01
Pasture Sire: ES ZX75 from 6-17 to 7-8-15



67

EIR B202

Purebred Red Angus REG#1700705

BD: 2-4-14 Tattoo: B202 Adj BW: 75 Adj WW: 535

CED	BW	WW	YW	Milk	TM	HPG	CEM	Stay	Marb	YG	CW	REA	Fat
9	-.22	63	98	19	5	3	1	13	.56	.01	25	.19	.00

BJR Make My Day 981
Bieber Make Mimi 7249
Bieber Sirena 6708
HXC Conquest 4405P
EIR Z201
EIR X211

A Make Mimi X Conquest that is built like a Conquest, moderate with a ton of middle. Out of a 1st calf heifer and her grandam is still in the herd.

A.I. Sire: HXC Conquest 4405P on 6-5-15 • Safe to AI
EPDs: 13 -4.0 62 100 23 4 -2 2 14
Carcass: .62 .06 24 .19 .01
Pasture Sire: ES ZX75 from 6-17 to 7-8-15



68

EIR B205

Purebred Red Angus REG#1700710

BD: 3-10-14 Tattoo: B205 Adj BW: 68 Adj WW: 555

CED	BW	WW	YW	Milk	TM	HPG	CEM	Stay	Marb	YG	CW	REA	Fat
11	-.39	64	104	26	5	0	2	14	.52	.03	26	.18	.01

Beckton Julian GG B571
HXC Conquest 4405P
HXC Ellie May MA638
Bieber Make Mimi 7249
EIR U203
EIR S216

Here is a direct Conquest daughter out of a Make Mimi cow. Same pedigree as many of the other Red Angus heifers, just flipped around. Her dam has had five calves with a WW ratio of 103. She is bred to our heifer bull, ES ZX75, who has worked very well for us the last several years, he's a Shear Force son, so keep the females.

Pasture Sire: ES ZX75 from 6-17 to 7-8-15 • 7-1-15



69

EIR B208

Purebred Red Angus REG#1700719

BD: 4-7-14 Tattoo: B208 Adj BW: 74 Adj WW: 618

CED	BW	WW	YW	Milk	TM	HPG	CEM	Stay	Marb	YG	CW	REA	Fat
-3	-1.0	71	116	21	1	8	3	16	.42	.11	37	.24	.03

Beckton Epic K F075
Beckton Epic R397 K
Beckton Kit F468 JL
MLK CRK Cub 722
EIR Y203
EIR W200

Here is a pedigree we like, Epic X Cub X Make Mimi. I've always said we like the Make Mimi cows and it's easy to see why when her Make Mimi grandam's last three bulls have averaged over \$6500. That's what we like, solid cow families. Bred to the new outcross heifer bull we tried last year, Julian 84S.

A.I. Sire: Red Hill B571 Julian 84S on 5-25-15
Safe to AI
EPDs: 5 -2.4 66 104 20 -4 8 3 17
Carcass: .39 .04 28 .30 .01
Pasture Sire: ES ZX75 from 6-17 to 7-8-15

70

EIR B200

Purebred Red Angus REG#1700752

BD: 2-4-14 Tattoo: B200 Adj BW: 72 Adj WW: 606

CED	BW	WW	YW	Milk	TM	HPG	CEM	Stay	Marb	YG	CW	REA	Fat
11	-3.6	64	98	23	6	5	3	14	.53	-.04	22	.24	-.01

BJR Make My Day 981
Bieber Make Mimi 7249
Bieber Sirena 6708
HXC Conquest 4405P
EIR Z200
EIR X210

We love the pedigree of this female, Make Mimi X Conquest, bred to the new outcross calving ease bull we tried last year, Julian 84S. Some of our favorite cows in the herd are Make Mimi's. Backed by a good cow family, her grandam's bull calf brought \$7750 in last year's bull sale.

A.I. Sire: Red Hill B571 Julian 84S on 5-10-15 • Safe to AI
EPDs: 12 -3.7 62 95 21 -1 6 3 15
Carcass: .45 -.04 21 .30 -.00
Pasture Sire: ES ZX75 from 6-17 to 7-8-15



BX210, Grandam son



71

EIR B203

Purebred Red Angus REG#1700707

BD: 3-5-14 Tattoo: B203 Adj BW: 86 Adj WW: 572

CED	BW	WW	YW	Milk	TM	HPG	CEM	Stay	Marb	YG	CW	REA	Fat
7	-2	72	114	20	7	4	2	13	.47	-.01	37	.32	-.01

BJR Make My Day 981
Bieber Make Mimi 7249
Bieber Sirena 6708
HXC Conquest 4405P
EIR Z203
EIR X213

If I were to make a suggestion, it would be to try to put together all of these Make Mimi X Conquest females. It's a time tested pedigree here that works. We also liked cows out of solid cow families, her dam, grandam and great grandam are all still in the herd. Her great grandam has a WW ratio of 102 on six calves.

A.I. Sire: Red Hill B571 Julian 84S on 6-3-15 • Safe to AI
EPDs: 10 -2.0 66 103 19 -1 6 3 15
Carcass: .42 -.02 28 .34 -.00
Pasture Sire: ES ZX75 from 6-17 to 7-8-15





THE KAPPERMAN FAMILY

Val asked if I would write a paragraph to open the Angus division. I can't put it all in one but I'll try. It is with a heavy heart that we are offering these females. As many of you know, Angie has moved to Wyoming and couldn't take her cows and I've lost our main herdsman. As a result, we're offering all of Angie's cows and everything else that wouldn't calve in January. With time needed for the Tri-State Neighbor, I have to cut back. I know all of these females will work for you as they have for us.



72

J K Miss Soldierette 309

Purebred Angus AAA#17611247

Sitz Upward 307R
MOGCK Upward 1030
MOGCK Entello 1446
S A Nobleman 817
J K Miss Soldierette 979
J K Soldierette 540

An own daughter of Mogck Upward 1030. 1030 is a maternal brother to the \$42,000 Mogck Frontman.

AI Sire: S A V Resource 1441 on 4-29-15 • Due approx. 2-9-16
Natural Sire: J K Broadside 463 on 5-8 to 7-29-15

BD: 1-4-13 Tattoo: 309 Act BW: 69 Adj WW: 560

CED	BW	WW	YW	CEM	Milk
+15	-2.3	+46	+102	+14	+26



73

J K Blackbirds Lady 335

Purebred Angus AAA#17649192

MOGCK Sure Shot
Mogck Bullseye
Mogck Mary 1255
S A One Way 298
J K Blackbirds Lady 101
J K Blackbirds Lady 930

Her first heifer calf indexed 114 in herd. Bred to our Duff Dream Look son. His daughters are very feminine.

Natural Sire: WCR DS Dream Look 272 on 5-10 to 6-10-15
Due approx. 3-18-16
Natural Sire: J K Broadside 463 on 6-10 to 8-1-15

BD: 1-11-13 Tattoo: 335 Act BW: 87 Adj WW: 615

CED	BW	WW	YW	CEM	Milk
+4	+1.6	+71	+130	+10	+31

74

J K Soldierette 340

Purebred Angus AAA#17649676

MOGCK Sure Shot
Mogck Bullseye
Mogck Mary 1255
SydGen Power Source 7017
J K Soldierette 110
J K Soldierette 874

Due to calve to J K Broadside 463, one of our good Broadside calves.

AI Sire: S A V Resource 1441 on 4-29-15
Natural Sire: J K Broadside 463 on 5-8 to 7-29-15 • Due approx. 3-1-16

BD: 1-12-13 Tattoo: 340 Act BW: 100 Adj WW: 728

CED	BW	WW	YW	CEM	Milk
-2	+4.5	+67	+118	+5	+32



75

J K Next Instinct 225
Purebred Angus AAA#17422347

BD: 1-3-12 Tattoo: 225 Act BW: 79 Adj WW: 704

CED	BW	WW	YW	CEM	Milk
+5	+1.4	+52	+85	+9	+23

Duff Basic Instinct 6501
D L S Next Instinct 941
D L S Miss Saratoga ST 419
Mohnen Bando 598 1734
J K Black Flame 823
J K Candy Rose 604

Next Instinct daughters have topped our sales in the past and crossing with Dream Look should leave some real stylish cattle.

Natural Sire: WCR DS Dream Look 272 on 3-26 to 6-10-15 • Due approx. 3-1-16
Natural Sire: J K Broadside 463 on 6-10 to 8-1-15

76

J K Miss Queen 226
Purebred Angus AAA#17255755

BD: 1-3-12 Tattoo: 226 Act BW: 79 Adj WW: 747

CED	BW	WW	YW	CEM	Milk
+8	+1.2	+65	+121	+12	+28

CAR Efficient 534
River Hills Efficient X363
River Hills Blackbird U125
Nelsons Meatmaker S601
J K Miss Queen 024
J K Miss Queen 537

One of the few X363 progeny we got before he was put down. Indexing 105 on her progeny.

Natural Sire: WCR DS Dream Look 272 on 3-26 to 6-10-15
Due approx. 3-18-16
Natural Sire: J K Broadside 463 on 6-10 to 8-1-15



77

J K Erica 301
Purebred Angus AAA#17649673

BD: 12-28-12 Tattoo: 301 Act BW: N/A Adj WW: 660

CED	BW	WW	YW	CEM	Milk
+10	-.5	+63	+117	+12	+22

MOGCK Sure Shot
Mogck Bullseye
Mogck Mary 1255
S A Nobleman 817
J K Erica 131
J K Erica 747

The Erica cow family has been one of our better maternal lines. An own daughter of Bullseye mated to Romeo will give a tremendous EPD profile.

Natural Sire: SA Romeo 1202 on 3-26 to 5-18 • Due approx. 2-24-16
Natural Sire: Millers Consensus H305 on 5-18 to 8-1-15





78 **J K Miss Forefront 276**
Purebred Angus AAA#17219243

BD: 1-19-12 Tattoo: 276 Act BW: 91 Adj WW: 758

CED	BW	WW	YW	CEM	Milk
-1	+4.0	+56	+85	+5	+23

Duff Basic Instinct 6501
D L S Next Instinct 941
D L S Miss Saratoga ST 419
SydGen Power Source 7017
J K Miss Forefront 980
Gant Forefront 286

Next Instinct x Romeo have been a great cross for us.

Natural Sire: SA Romeo 1202 on 3-26 to 5-18 • Due approx. 2-18-16
Natural Sire: Millers Consensus H305 on 5-18 to 8-1-15



79 **J K Black Flame 287**
Purebred Angus AAA#17219253

BD: 1-23-12 Tattoo: 287 Act BW: 81 Adj WW: 633

CED	BW	WW	YW	CEM	Milk
+8	+7	+53	+104	+7	+37

Sitz Upward 307R
MOGCK Upward 1030
MOGCK Entello 1446
SydGen Power Source 7017
J K Miss Black Flame 003
J K Miss Black Flame 866

A really good Upward daughter has weaned off two calves ratioing 113. Her 2015 heifer weaned of at 830 pounds.

AI Sire: S A V Resource 1441 on 4-29-15
Natural Sire: J K Broadside 463 on 5-8 to 7-29-15 • Due approx. 3-10-16

80 **J K Blackcap Pride 253**
Purebred Angus AAA#17219212

BD: 1-14-12 Tattoo: 253 Act BW: 85 Adj WW: 678

CED	BW	WW	YW	CEM	Milk
+5	+1.7	+54	+107	+6	+22

TC One Way 618
S A One Way 298
GW Royal Queen P1249
River Hills Kahuna 175M
J K Blackcap Pride 216
J K Blackcap Pride 216

Natural Sire: SA Romeo 1202 on 3-26 to 5-18 • Due approx. 2-19-16
Natural Sire: Millers Consensus H305 on 5-18 to 8-1-15

81 **J K Erica Lass 266**
Purebred Angus AAA#17219227

BD: 1-16-12 Tattoo: 266 Act BW: 85 Adj WW: 698

CED	BW	WW	YW	CEM	Milk
+0	+4.3	+55	+100	+7	+16

S A V Net Worth 4200
R5 Net Worth 9399
D 175 Melissa S6351
Rockn D Focus 2007
J K Erica Lass 358
J K Erica Lass 461

Another Net Worth granddaughter.
Bred to SA Romeo, BW 1.6 - YW 148 and he's proven that spread!
Natural Sire: SA Romeo 1202 on 3-26 to 5-18 • Due approx. 2-3-16
Natural Sire: Millers Consensus H305 on 5-18 to 8-1-15



82

J K Soldierette 150
Purebred Angus AAA#16972007

BD: 1-10-11 Tattoo: 150 Act BW: 100 Adj WW: 644

CED	BW	WW	YW	CEM	Milk
+4	+3.0	+51	+100	+11	+24

ALC Nobleman N01N
S A Nobleman 817
S A Queen Jessica 45
K M Krugerrand Krush
J K Soldierette 306
J K Soldierette 051

A Nobleman daughter that is hard to let go of. Her calves are ratioing 102 weaning and 102 yearling.

AI Sire: S A V Resource 1441 on 4-29-15 • Due approx. 2-9-16
Natural Sire: J K Broadside 463 on 5-8 to 7-29-15

83

J K Miss Black Flame 204
Purebred Angus AAA#17219172

BD: 12-24-11 Tattoo: 204 Act BW: 77 Twin Adj WW: 726
WW Ratio: N/A Adj YW: N/A YW Ratio: N/A

CED	BW	WW	YW	CEM	Milk
-10	+7.1	+54	+101	-3	+19

S A V Net Worth 4200
R5 Net Worth 9399
D 175 Melissa S6351
Landmark Traveler 69
J K Miss Black Flame 611
J K Miss Black Flame 3023

An own daughter of R5 Net Worth, our choice of his contemporaries at Reppes. Bred to our senior herd sire SA Romeo. Romeo's calf crops have out indexed any A.I. sires we've put him against.

Natural Sire: SA Romeo 1202 on 3-26 to 5-18 (5-15-15) • Due approx. 2-25-16
Natural Sire: Millers Consensus H305 on 5-18 to 8-1-15



84

J K Enchantress 155
Purebred Angus AAA#16972182

BD: 1-11-11 Tattoo: 155 Act BW: 91 Adj WW: 565

CED	BW	WW	YW	CEM	Milk
+3	+2.9	+41	+82	+6	+19

ALC Nobleman N01N
S A Nobleman 817
S A Queen Jessica 45
Bon View Traveler 2146
J K Enchantress 222
J K Enchantress 632

Another good Nobleman daughter that is hard to let go of.

Natural Sire: WCR DS Dream Look 272 on 5-10 to 6-10-15 • Due approx. 2-19-16
Natural Sire: J K Broadside 463 on 6-10 to 8-1-15

85

J K Soldierette 1106
Purebred Angus AAA#16972225

BD: 3-1-11 Tattoo: 1106 Act BW: 96 Adj WW: 602

CED	BW	WW	YW	CEM	Milk
+0	+4.3	+46	+90	+5	+29

S A F Connection
SydGen Power Source 7017
Three Trees Forever Lady 0487
K M Krugerrand Krush
J K Soldierette 540
J K Soldierette 306

A really good Power Source daughter with progeny ratioing 101 weaning and 103 yearling.

AI Sire: S A V Resource 1441 on 4-29-15
Natural Sire: J K Broadside 463 on 5-8 to 7-29-15 • Due approx. 3-1-16



86

J K Soldierette 2113

Purebred Angus AAA#17219275

BD: 2-14-12 Tattoo: 2113 Act BW: 81 Adj WW: 668

CED	BW	WW	YW	CEM	Milk
+8	+1.1	+54	+96	+10	+25

TC One Way 618
S A One Way 298
GW Royal Queen P1249
River Hills Kahuna 175M
J K Soldierette 650
J K Soldierette 051

A One Way daughter with a bull in the keeper pen.

AI Sire: S A V Resource 1441 on 4-29-15
Natural Sire: J K Broadside 463 on 5-8 to 7-29-15 • Due approx. 3-20-16



87

J K Miss Black Flame 003

Purebred Angus AAA#16816543

BD: 1-1-10 Tattoo: 003 Act BW: 89 Adj WW: 666

CED	BW	WW	YW	CEM	Milk
+1	+2.9	+48	+83	+4	+28

S A F Connection
SydGen Power Source 7017
Three Trees Forever Lady 0487
S A F Traveler 154
J K Miss Black Flame 866
J K Miss Black Flame 529

Power Source daughter ratioing
102 weaning and 104 yearling on
her progeny.

AI Sire: S A V Resource 1441 on 4-29-15
Natural Sire: J K Broadside 463 on 5-8 to 7-29-15 • Due approx. 2-24-16



88

J K Miss Rito 008

Purebred Angus AAA#16816559

BD: 1-4-10 Tattoo: 008 Act BW: 91 Adj WW: 621

CED	BW	WW	YW	CEM	Milk
+3	+2.9	+46	+98	+12	+13

ALC Nobleman N01N
S A Nobleman 817
S A Queen Jessica 45
Rockn D Focus 2007
J K Miss Rito 3003
J K Miss Rito 720

Nobleman daughter that goes back to Rock
D Focus. He was the top indexing bull in his
contemporary group at Midland.

Natural Sire: WCR DS Dream Look 272 on 3-26 to 6-10-15
Natural Sire: J K Broadside 463 on 6-10 to 8-1-15 • Due approx. 4-10-16



89

J K Miss Black Flame 942

Purebred Angus AAA#16543542

BD: 1-20-09 Tattoo: 942 Act BW: 94 Adj WW: 723

CED	BW	WW	YW	CEM	Milk
+2	+3.5	+52	+89	+7	+18

Woodhill Foresight
Mohnen Foresight 927
LCC Pride K3915
River Hills Kahuna 175M
J K Miss Black Flame 728
J K Miss Black Flame 3023

Good, solid cow that the vet called due with twins.

Natural Sire: SA Romeo 1202 on 3-26 to 5-18

Natural Sire: Millers Consensus H305 on 5-18 to 8-1-15 (5-22-15) • Due approx. 3-4-16 Twins

90

J K Lady Rito 809

Purebred Angus AAA#16225647

BD: 1-4-08 Tattoo: 809 Act BW: 101 Adj WW: 689

CED	BW	WW	YW	CEM	Milk
-4	+5.2	+58	+95	-1	+18

Baldrige Kahuna 39K
River Hills Kahuna 175M
Pleasant Of Conanga 736
S A F Traveler 154
J K Lady Rito 891
J K Miss Ideal 409

An own Kahuna daughter that will be having a Resource baby that should be stout.

AI Sire: S A V Resource 1441 on 4-29-15 • Due approx. 2-9-16
Natural Sire: J K Broadside 463 on 5-8 to 8-1-15



91

J K Miss Queen 001

Purebred Angus AAA#16816612

BD: 12-26-09 Tattoo: 001 Act BW: 78 Adj WW: 602

CED	BW	WW	YW	CEM	Milk
+11	-5	+40	+83	+14	+17

ALC Nobleman N01N
S A Nobleman 817
S A Queen Jessica 45
K M Krugerrand Krush
J K Miss Queen 348
J K Miss Queen 766

A Nobleman daughter that goes back to the Bon View 2415 bull that left us a lot of good cows.

AI Sire: S A V Resource 1441 on 4-29-15 • Due approx. 2-9-16
Natural Sire: J K Broadside 463 on 5-8 to 7-29-15





92 J K Soldierette 803
Purebred Angus AAA#16225638

BD: 12-28-07 Tattoo: 803 Act BW: 93 Adj WW: 641

CED	BW	WW	YW	CEM	Milk
+3	+3.0	+46	+78	+5	+28

- Bon View Bando 598
- Mohnen Bando 598 1734
- Mohnen Zara 577
- River Hills Kahuna 175M
- J K Soldierette 650
- J K Soldierette 051

CA Carrier. Always brings in a good calf. Has four calves ratioing 105 weaning and 103 yearling.

AI Sire: S A V Resource 1441 on 4-29-15
Natural Sire: J K Broadside 463 on 5-8 to 7-29-15 • Due approx. 3-1-16



93 J K Erica 876
Purebred Angus AAA#16252710

BD: 3-5-08 Tattoo: 876 Act BW: 91 Adj WW: 596

CED	BW	WW	YW	CEM	Milk
+3	+4.3	+43	+80	+9	+17

- B/R Target 278
- LRH Target 6364
- L H R Duches 3364
- Viewlawn Gap 89
- J K Erica 413
- J K Erica 874

Pedigree predictable and easy fleshing.

AI Sire: S A V Resource 1441 on 4-29-15 • Due approx. 2-9-16
Natural Sire: J K Broadside 463 on 5-8 to 8-1-15



94 J K Miss Algoma 749
Purebred Angus AAA#15912566

BD: 2-4-07 Tattoo: 749 Act BW: 73 Adj WW: 669

CED	BW	WW	YW	CEM	Milk
+10	+1	+51	+94	+10	+19

- Baldrige Kahuna 39K
- River Hills Kahuna 175M
- Pleasant Of Conanga 736
- J K Precision 118
- J K Miss Algoma 3006
- J K Miss Algoma 158

CA Carrier. Calves always wean above the average.

AI Sire: S A V Resource 1441 on 4-29-15 • Due approx. 2-9-16
Natural Sire: J K Broadside 463 on 5-8 to 7-29-15

95

J K Miss Georgina 704

Purebred Angus AAA#15912478

Baldrige Kahuna 39K
River Hills Kahuna 175M
Pleasant Of Conanga 736
Simonsons Supreme 2379
J K Miss Georgina 263
J K Miss Georgina 972

Georgina cow family. She has stayed in the herd because she works.

AI Sire: S A V Resource 1441 on 4-29-15 • Due approx. 2-9-16
Natural Sire: J K Broadside 463 on 5-8 to 7-29-15

BD: 12-29-06 Tattoo: 704 Act BW: 91 Adj WW: 710
WW Ratio: N/A Adj YW: N/A YW Ratio: N/A

CED	BW	WW	YW	CEM	Milk
+5	+3.0	+49	+92	+7	+15

Angus Reference Sires

S A V Resource 1441



Purebred Angus
AAA#17016597
BD: 1-7-11

Sire:
Rito 707 of Ideal 3407 7075
Dam:
S A V Blackcap May 4136

EPDs: +1 +3.5 +72 +135 -4 +27
Carcass: +73 +.12 +1.04 +.077

Connealy Capitalist 028



Purebred Angus
AAA#16752262
ASA#2627894
BD: 1-11-10

Sire:
S A V Final Answer 0035
Dam:
Prides Pita of Conanga 8821

EPDs: 20 -4.2 66 114 11 33 66 * 12.1
Carcass: 31.9 .02 .75 .100 1.02 153 78

J K Broadside 463

Purebred Angus AAA#17886804
BD: 1-14-14

Sire: S A Broadside 1411
Dam: J K Blackcap Pride 619

EPDs: +3 +2.9 +60 +104 +8 +21

When we needed a cleanup bull we didn't have far to go. Good footed, free moving and one of the top calves in his contemporary group.

WCR DS Dream Look 241

Purebred Angus AAA#17461191
BD: 2-10-12

Sire: Duff May Dream Look 8063
Dam: D L S Miss Saratoga ST 419

EPDs: +9 -.6 +49 +73 +9 +21
Carcass: +14 +.12 +.29 -.015

One of the lead off bulls at Wildcat Creek in Kansas. Puts thickness and fleshing in his calves. We had the misfortune of losing him this summer so this will be the last group of calves to hit the ground.

Millers Consensus H305

Purebred Angus AAA#18005548
BD: 3-30-14

Sire: Connealy Consensus 938X
Dam: Lassie Pride B452 of M A F

EPDs: -2 +3.7 +61 +103 +4 +21
Carcass: +48 +.51 +.68 -.020



S A V Angus Valley 1867



Purebred Angus
AAA#17016630
ASA#2839265
BD: 1-5-11

Sire:
S A V Iron Mountain 8066
Dam:
S A V May 2397

EPDs: 22 -2.8 61 112 13 20 50 * 9.5
Carcass: 33.5 .11 .88 .073 .56 164 76

PVF Insight 0129



Purebred Angus
AAA#16805884
ASA#2835949
BD: 4-17-10

Sire:
S A V Brilliance 8077
Dam:
PVF Missie 790

EPDs: 19 -2.0 70 123 9 27 62 * 12.4
Carcass: 40.7 -.06 .56 .010 68 134 74

S A Romeo 1202

Purebred Angus AAA#17392486
BD: 1-17-12

Sire: TC Romeo 917
Dam: S A Forever Lady 1108

EPDs: +1 +1.6 +76 +148 +7 +29
Carcass: +54 +.44 +.50 +.002

Look at this tremendous EPD spread! When compared to the AI sires we've sampled Romeo's calves consistently out do them. These EPDs are the real thing. Romeo's calves come easy, we've never assisted one and they grow! They also have a very good look to them.

Reference Sires

W/C United 956Y



Homo Black Homo Polled
1/2 SM 1/2 AN
 ASA#2614725
 BD: 3-3-11

Sire:
 TNT Tuition U238
 Dam:
 Miss Werning 956W

EPDs: 11 .1 91 155 5 17 62 * 9.3
 Carcass: 62.6 .03 .56 .036 .84 143 92

J Bar J Nightride 225Z



Homo Black Homo Polled
5/8 SM 3/8 AN
 ASA#2628568
 BD: 2-29-12

Sire:
 GW Premium Beef 021TS
 Dam:
 J Bar J Miss ND 793X

EPDs: 23 -5.2 51 102 12 31 56 * 12.9
 Carcass: 24.4 -.18 .85 -.003 .70 197 86

GLS New Direction X184



Black Dbl Polled
Purebred SM
 ASA#2536539
 BD: 3-20-10

Sire:
 HSF Better Than Ever
 Dam:
 GLS N6

EPDs: 8 -.4 53 82 5 20 46 24 10.9
 Carcass: 18.2 -.36 -.17 -.054 .83 114 57

Welshs Dew It Right 067T



Homo Black Homo Polled
Purebred SM
 ASA#2403649
 BD: 2-10-07

Sire:
 HTP SVF In Dew Time
 Dam:
 SVF/NJC Senerita N29

EPDs: 16 .6 64 82 10 16 48 24 14.4
 Carcass: 18.5 -.39 .14 -.064 .82 139 70

ES Ridgerider YW3



Black Dbl Polled
Purebred SM
 ASA#2597533
 BD: 2-18-11

Sire:
 CDI Ridgeline 32T
 Dam:
 ES W3

EPDs: 23 -1.8 63 94 13 25 57 16 10.8
 Carcass: 22.9 -.49 .05 -.066 1.21 136 73

Hook's Broadway 11B



Homo Black Homo Polled
Purebred SM
 ASA#2854437
 BD: 2-24-14

Sire:
 MCM Top Grade 018X
 Dam:
 Hook's Water Lily 89W

EPDs: 12 -1.5 62 96 11 26 57 * 10.8
 Carcass: 24.9 -.42 .43 -.049 1.12 150 76

Hook's Yellowstone 97Y



Homo Black Homo Polled
Purebred SM
 ASA#2612546
 BD: 3-8-11

Sire:
 Hook's Taurus 24T
 Dam:
 Hooks Sheyenne 77S

EPDs: 15 -.2 64 100 10 26 58 * 11.5
 Carcass: 29.5 -.41 .38 -.069 .96 150 76

CSCX Bandwagon 513A



Black Polled/Scurred
Purebred SM
 ASA#2757819
 BD: 2-3-13

Sire:
 TJSC Optimus Prime 12W
 Dam:
 KLS Diamond W516

EPDs: 4 4.0 69 95 7 16 50 * 9.8
 Carcass: 32.1 -.11 .11 -.009 .53 95 61

Remington Lock N Load 54U



Hetero Black Homo Polled
Purebred SM
 ASA#2503661
 BD: 5-8-08

Sire:
 Remington On Target 2S
 Dam:
 Bar 15 Miss Knight 78E-51G

EPDs: 7 1.1 58 114 10 17 46 18 11.5
 Carcass: 41.0 -.53 -.05 -.085 1.37 111 63

LLSF Addiction AY792



Black Dbl Polled
Purebred SM
 ASA#2762392
 BD: 3-13-13

Sire:
 MCM Top Grade 018X
 Dam:
 LLSF Eye Candy Y792

EPDs: 6 2.1 63 98 9 22 53 * 9.2
 Carcass: 31.6 -.33 .32 -.052 .90 118 68

Reference Sires

SS/PRS Tail Gater 621Z



**Hetero Black Dbl Polled
Purebred**
ASA#2642951
BD: 3-3-12

Sire:
HTP/SVF Duracell T52
Dam:
KenCo Miley Cottontail

EPDs: 11 1.4 69 98 8 21 55 22 11.2
Carcass: 29.6 -.30 .09 -.047 .81 128 71

JF Epic 1206Y



Black Dbl Polled Purebred
ASA#2625777
BD: 2-21-11

Sire:
Mr. NLC Upgrade U8676
Dam:
JF Latisha 5153R

EPDs: 8 2.6 73 107 8 29 66 20 11.7
Carcass: 36.6 -.42 .29 -.084 1.03 131 78

MCM Top Grade 018X



**Homo Black Homo Polled
Purebred**
ASA#2540315
BD: 3-11-10

Sire:
Mr. NLC Upgrade U8676
Dam:
MCM 513R

EPDs: 9 -1.2 58 96 10 29 58 * 10.1
Carcass: 25.7 -.42 .62 -.069 .96 146 79

W/C Lock Down 206Z



**Homo Black Homo Polled
1/2 SM 1/2 AN**
ASA#2658496
BD: 2-29-12

Sire:
Remington Lock N Load 54U
Dam:
G C F Miss New Level R206

EPDs: 16 -1.5 75 130 10 17 54 * 10.8
Carcass: 45.8 -.08 .50 .005 .75 158 84

S D S Graduate 006X



**Homo Black Homo Polled
5/8 SM 3/8 AN**
ASA#2548143
BD: 2-11-10

Sire:
Hooks Shear Force 38K
Dam:
S D S Queen 814U

EPDs: 20 -5.7 58 99 11 20 49 * 14.5
Carcass: 21.0 -.38 .30 -.023 1.13 162 75

Yardley Utah Y361



**Black Dbl Polled
3/4 SM 1/4 AN**
ASA#2641894
BD: 3-5-11

Sire:
GCC Hard As Steel 144W
Dam:
Miss Yardley T170

EPDs: 10 2.4 66 97 9 4 37 * 11.5
Carcass: 31.2 -.29 .33 -.028 .94 126 68

Mr. HOC Broker



Black Dbl Polled Purebred
ASA#2531081
BD: 1-20-10

Sire:
SVF Steel Force S701
Dam:
JM BF H25

EPDs: -1.4 4.9 74 108 10 11 49 26 6.4
Carcass: 41.1 -.28 -.26 -.086 .59 97 57

ES ZX75



Red Dbl Polled Purebred
ASA#2658238
BD: 2-20-12

Sire:
Hooks Shear Force 38K
Dam:
ES X75

EPDs: 10 3.1 78 111 6 25 64 19 10.6
Carcass: 39.9 -.36 .38 -.041 1.18 138 82

HXC Conquest 4405P



Purebred Red Angus
RAAA#975924
BD: 1-25-04

Sire:
Beckton Julian GG B571
Dam:
HXC Ellie May MA638

EPDs: 17 -5.8 62 102 26 2 -5 3 14
Carcass: .69 .11 22 .18 .03

Red Hill B571 Julian 84S



Purebred Red Angus
RAAA#1147702
BD: 9-2-06

Sire:
Beckton Julian GG B571
Dam:
Beckton Barmaid M554 CH

EPDs: 13 -3.8 60 92 18 -8 8 3 17
Carcass: .37 -.04 19 .36 .00



2014 SALE CANDIDS

• • •

**We look forward to
seeing everyone again
this year on
December 7th!**





MAKE IT A SIMMENTAL WEEKEND!



**Jewels of the Northland Sale in
Clara City, MN on December 5th & our
Dakota Made Sale on December 7th!**

*Trucking will be coordinated between the two
sales for your convenience.*





This sale will be broadcast live on the internet! **DVAuction** Broadcasting Real-Time Auctions



Dakota Made 2015

Monday, December 7th
12:00 Noon Sharp!
Eichacker Sale Facility
Salem, South Dakota



Eberspacher
ENTERPRISES INC.

2904 County Road 6
Marshall, MN 56258

First Class Mail: Time Dated Material!

First Class
U.S. Postage
PAID
Permit #86
Marshall, MN